

Available  
online at  
[www.ctsm.co.uk](http://www.ctsm.co.uk)

**CTS**  
WAREHOUSE

COMMUNICATIONS  
T R A D E  
S U P P L I E S

# The Product Portfolio

**C**onnectivity **T**elephony **S**ecurity

**WELCOME to our new catalogue.....**



Since our last catalogue significant developments have taken place at CTS, which in turn have delayed the launch of the latest catalogue. A move to purpose built premises just up the road from the old site has given us a bigger storage facility, better goods receiving and despatch facilities and new offices. Investment in product handling equipment and IT has resulted in improved customer satisfaction and efficiency.

More significantly, CTS is now a major British manufacturer of internal telephone cables, jumper wires, drop-wire and alarm cables. We are proud to be manufacturing in Britain and supplying not only domestic customers with our cable but also exporting to Eire, Europe, the Caribbean and the Middle East.

As always the emphasis remains on quality products and good prices resulting in excellent value for money. Orders can be accepted by phone, fax or e-mail and increased stocks mean more orders than ever are being despatched for next day delivery.

Looking through this latest catalogue you will see a number of changes compared to the previous one – our popular E-MOD range has been expanded, with a wider range of modules than ever before. Our range of Belden equivalent cables has grown, as has our connector and adaptor portfolio and more emphasis has been placed on the manufacturing capability we now have.

From our base in Peterborough we continue to be a major force in the telecoms and data industries – our traditional marketplace, we continue to increase our presence in the CCTV and security markets and we grow our manufacturing business year on year, all in all we offer a comprehensive service to you – the customer.

Our philosophy remains as ever ‘no slogan – just service’ and our aim is to provide the customer with technical support, quality products and good service. With our comprehensive product range we are sure there will be items of interest for all types of customers – O.E.M., wholesaler, distributor, exporter or installer.

We look forward to being of service.....

VOICE      DATA      SECURITY      POWER      FIBRE

**PRIORITY ORDER LINE - 01733-311592**



# CONTENTS



<b>SECTION 1</b>	<b>Voice Products</b>	<b>4</b>
------------------	-----------------------	----------

<b>SECTION 2</b>	<b>Data Products</b>	<b>9</b>
------------------	----------------------	----------

<b>SECTION 3</b>	<b>Voice &amp; Data Cables</b>	<b>18</b>
------------------	--------------------------------	-----------

<b>SECTION 4</b>	<b>Security Cables &amp; Connectors</b>	<b>25</b>
------------------	---	-----------

<b>SECTION 5</b>	<b>Cables</b>	<b>33</b>
------------------	---------------	-----------

<b>SECTION 6</b>	<b>Installation Accessories</b>	<b>39</b>
------------------	---------------------------------	-----------

<b>SECTION 7</b>	<b>Cable Manufacture</b>	<b>41</b>
------------------	--------------------------	-----------

**PRIORITY FAX LINE - 01733-344775**

# SECTION 1 - Line Jack Units

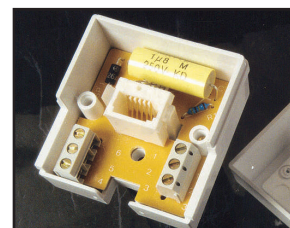
All dimensions in millimetres.

## 1 Series - c/w back box for surface mounting. Dimensions 55 x 55 x 29

1/1A	Master IDC
1/2A	PBX Master IDC
1/3A	Secondary IDC
1/4A	Master screw terminal
1/5A	PBX Master screw terminal
1/6A	Secondary screw terminal

Order Ref.

L 001
L 002
L 003
L 004
L 005
L 006

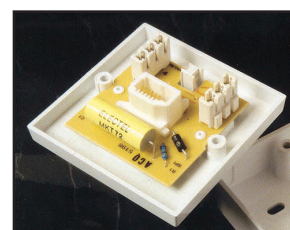


## 2 Series -c/w back box for surface mounting. Dimensions 68 x 68 x 29

2/1A	Master IDC
2/1A	Master IDC Enclosed
2/2A	PBX Master IDC
2/3A	Secondary IDC
2/3C	As 2/3A, reverse clip
2/4A	Master screw terminal
2/5A	PBX Master screw terminal
2/6A	Secondary screw terminal

Order Ref.

L 007
L 007ENC
L 008
L 009
L 029
L 010
L 011
L 012

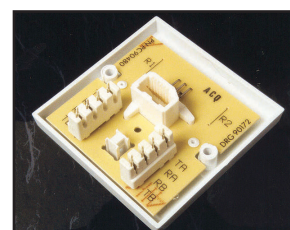


## 3 Series - single faceplate. Dimensions 86 x 86

3/1A	Master IDC
3/2A	PBX Master IDC
3/3A	Secondary IDC
3/3C	As 3/3A, reverse clip
3/4A	Master screw terminal
3/5A	PBX Master screw terminal
3/6A	Secondary screw terminal

Order Ref.

L 013N
L 014
L 015
L 030
L 016
L 017
L 018



## 4 Series - double faceplate. Dimensions 86 x 86

4/1A	Master IDC
4/2A	PBX Master IDC
4/3A	Secondary IDC
4/4A	Master screw terminal
4/6A	Secondary screw terminal

Order Ref.

L 019
L 020
L 021
L 022
L 023



## 5 Series - double faceplate, 1 circuit. Dimensions 86 x 86

5/1A	Master IDC
5/3A	Secondary IDC
5/4A	Master screw terminal
5/6A	Secondary screw terminal

Order Ref.

L 024
L 025
L 026
L 027



## DXE Series - for GPT Masterline system

2 Series	Termination socket
3 Series	Termination socket
3 Series	Through socket

Order Ref.

L 031
L 033
L 032



# SECTION 1 - Metal Clad Inserts

## Metal Clad Inserts - for use in metal faceplates e.g. brass, chrome.

BT Secondary IDC, black  
BT Secondary IDC, white  
BT Master IDC, black  
BT Master IDC, white

## Miscellaneous sockets

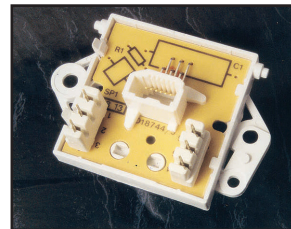
NTE 5A  
NTE 5B  
LJU 6C  
ISDN Single Outlet  
Privacy socket  
Privacy adaptor

## Plastic back boxes - for 3,4 and 5 series Line Jack Units and data outlets.

Single 22 mm deep  
Single 24 mm deep  
Single 28 mm deep  
Single 32 mm deep  
Double 22 mm deep  
Double 32 mm deep  
Single 35 mm deep (trunking style)  
Double 35 mm deep (trunking style)

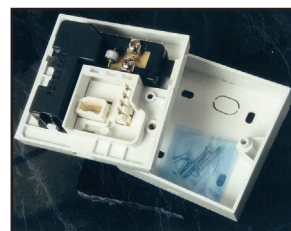
### Order Ref.

L 034BS  
L 034WS  
L 035BS  
L 035WS



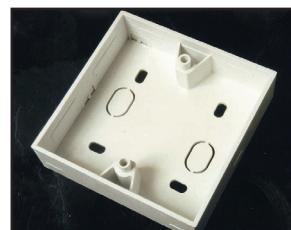
### Order Ref.

L 036  
L 037  
L 034  
L 040  
L 041  
L 042



### Order Ref.

L 02822  
L028A  
L 028W  
L02832  
L 028P2  
L 028OM  
L 028T  
L 028T2



# LOGO SERVICE

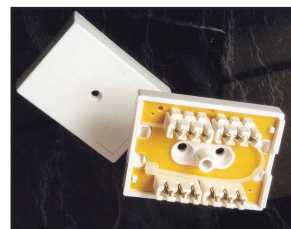
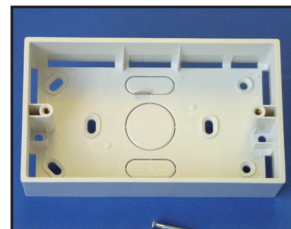
We can customise your telephone sockets by printing your company logo on them, only a small minimum order quantity would apply. Telephone our sales office for further details.

## Connection Boxes - Block Terminals - Dimensions 56mm x 41mm x 23mm.

77A 3 pair IDC - 3 pair IDC  
77B 3 pair screw - 3 pair screw  
78A 4 pair IDC - 4 pair IDC  
80A 3 way IDC - 3 individual screw  
80B 3 way screw - 3 individual screw  
84A 3 pair IDC - 3 pair screw  
85E as 80A, c/w 1 screw terminal & 8A crimps  
89A 6 pair IDC - 6 pair IDC

### Order Ref.

B 001  
B 010  
B 012  
B 011  
B 011B  
B 013  
B 014  
B 029

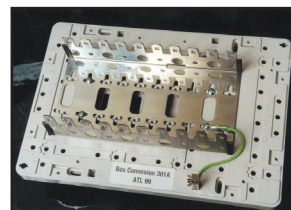


## Internal Connection Boxes - designed to accept 237A strip connections.

201D Complete with 2 x 237A strip connections  
220A 30 pair box c/w backmount frame & 10 way PCB earth strip  
251A 50 pair box c/w backmount frame & earth bar  
250/7 70 pair box c/w backmount frame & earth bar  
301A 100 pair box c/w backmount frame & earth bar  
304A 200 pair box c/w backmount frame & earth bar

### Order Ref.

B 004DCTS  
B 005/220  
B 006CTS  
B 006A  
B 015CTS  
B 015A



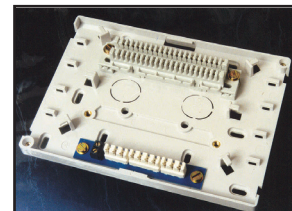
**ORDER BEFORE 4PM - FOR SAME DAY DESPATCH**

# SECTION 1 - Connection Boxes

All dimensions in millimetres.

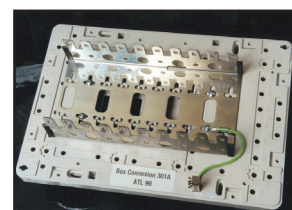
## Metal Box Connections - to accommodate 237A strip connections, not included

		Order Ref.
510	up to 340 pair box c/w hinged/reversible door, 34 way mounting frame, 2 earth clamps. Weight 13 Kgs. Dimensions 1000 x 300 x 130	B 016
520	up to 680 pair box c/w hinged/reversible door, two 34 way mounting frames, 2 earth clamps. Weight 20 Kgs. Dimensions 1000 x 500 x 130	B 017
530	up to 1020 pair box c/w hinged/reversible door, three 34 way mounting frames, 2 earth clamps. Weight 29Kgs. Dimensions 1000 x 750 x 130	B 018
540	Up to 1360 pair box complete with hinged/reversible door, four 34 way mounting frames, 2 earth clamps. Weight 40kgs. Dimensions 1000 x 925 x 130	B018A



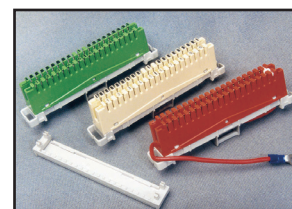
## External Connection Boxes - weatherproof boxes, with or without connectors

		Order Ref.
A100	100 pair external box connection. Dimensions 377 x 193 x 110	B 002A100
Ext Box	30 pair external box	B 002AT
Ext Box	50 pair external box	B 002AT 50
Ext Box	100 pair external box	B 002AT 20
66B	screw terminal, 2/3 pair box. Dimensions 115 x 90 x 25	B 002



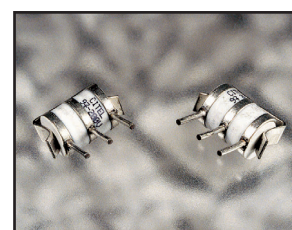
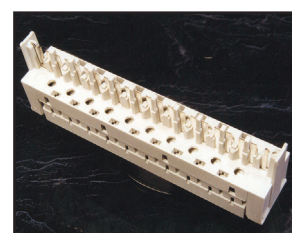
## Distribution Frames - accept 237A strip connectors (not included).

		Order Ref.
108A	Single, 690 pair. Weight 16 Kgs. Dimensions 2004 x 285 x 150	B 033A
108A	Double 1380 pair. Weight 30 Kgs. Dimensions 2004 x 560 x 150	B 033
111B	690 pair. Weight 15 Kgs. Dimensions 2010 x 280 x 150	B 033B
City 80	1600 pair. Weight 35 Kgs. Dimensions 2250 x 570 x 150	B 034



## Connection Box Accessories

		Order Ref.
237A	IDC terminal strip, 10 pair, inc. disconnection facility (237A also available in blue, green, red, brown)	B 007
237B	IDC terminal strip, 10 pair no disconnection facility	B 007B
237D	76 way IDC earth strip c/w earth lead	B 009
237E	10 pair IDC earth strip c/w earth lead	B 009C
241B	10 pair low profile expansion strip	B 008
51A	Designation strip c/w plastic cover and paper label	B 019
5B	Protector mount, 10 pair, accepts 14A/1 and 21A arrestors	B 023
21A	Surge arrestor, rated 200v-5A/5KA	B 022
14A	Surge arrestor, rated 260v-5A/5KA	B 024
18B	Protector	B 021
11A	Protector	B 030
37B	Jumper ring, plastic	B 027
23A	Locking wedge, 1 pair disconnection plug, black	B 025
24A	Locking wedge, 1 pair blind plug, red	B 026
25A	Locking wedge, (10 way)	B 025A
8A	Jelly crimp (2 wire)	B 037
8B	Jelly crimp (3 wire)	B 037A





# SECTION 1 - Telephone Leads and Connectors

**Line Cords - telephone plug to grommet and tags, light grey, other colours and lengths available.**

	<i>Order Ref.</i>
4 way, 3 metre	X 002/3
4 way, 5 metre	X 002/5
6 way, 3 metre	X 003/3

**Plug - Plug Leads - telephone plug to telephone plug, light grey, other colours and lengths available.**

	<i>Order Ref.</i>
4 way, 3 metre	X 004/3
4 way, 5 metre	X 004/5
6 way, 2 metre	X 005/2
6 way, 3 metre	X 005/3
6 way, 5 metre	X 005/5

**Extension Leads - telephone plug to telephone socket, grey or white.**

	<i>Order Ref.</i>
4 way, 3 metre	X 013
4 way, 5 metre	X 012
4 way, 10 metre	X 011
4 way, 15 metre	X 010
4 way, 20 metre	X 009
4 way, 25 metre	X 008
6 way, 3 metre	X 015
6 way, 5 metre	X 016
6 way, 10 metre	X 017
6 way, 15 metre	X 017B
6 way, 20 metre	X 017A

## Miscellaneous Leads

	<i>Order Ref.</i>
BT431A - RJ11, 3 metre	X 006
RJ11 - BT631A, 3 metre	X 007
4 way, 3 metre curly	X 014
631A - 631A mod fit	X 018
Modem lead, 3 metre	X 019
RJ45 - BT, 4 way, black, 3 mtr.	X 023
RJ45 - BT, 4 way crossed, 3 mtr.	X 024
RJ45- 631A, 3 metre	X 022
Extension lead, grey, 3 metre	X 025

## KITS - CAN BE MADE UP TO YOUR SPECIFICATIONS.

	<i>Order Ref.</i>
15 metre extension lead kit	X 001
Single socket kit	X 020



If you have a requirement for a lead not listed on this page, simply fax your requirement through to our production manager on 01733-311592 remembering to advise, length, wiring configuration, quantity, colour and connectors required, we will quote by return.

## SECTION 1 - Miscellaneous

### Plugs - 5 versions available.

431A	4 way, right hand
430A	4 way left hand
631A	6 way, right hand
630A	6 way, left hand
432A	4 way, right hand SBS

#### Order Ref.

A 006
A 016
A 007
A 015
A 017



### Sockets -for PCB or wire connect

601A	right hand, PCB
602A	left hand, PCB
605A	right hand, PCB
608A	IDC, right hand, wire

#### Order Ref.

M 026
M 028
M 027
A 018

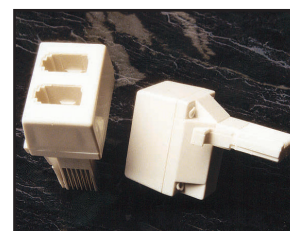


### Bells - acoustic and visual indicators

Tone caller, c/w flashing light
Extension bell
Bedlam tone caller c/w 3 mtr. lead

#### Order Ref.

A 003
A 003B
A 005

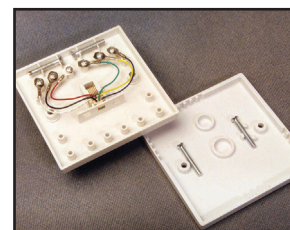


### Adaptors and Switches

4 way, double, compact
6 way, double, compact
6 way, double, 10/3A
BT - RJ11 adaptor
RJ11 - BT socket adaptor
Switch 2A
RJ11 Double Adaptor
RJ45 Double Adaptor
ADSL splitter

#### Order Ref.

A 008/4
A 008/6
A 008P
A 013
A 014
A 019
A 035
A 036
A 087

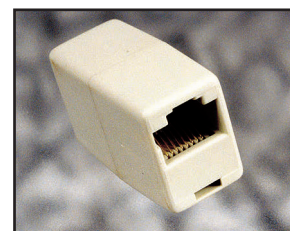


### RJ11 Sockets

RJ11 single surface mount, 6C
RJ11 single surface mount, 4C
RJ11 single flush mount, 6C
RJ11 double flush mount, 6C

#### Order Ref.

D 010A
D 010B
D 013
D 012

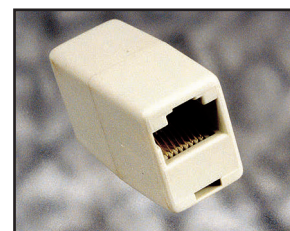


### Couplers

6C jack - jack coupler
RJ45 - RJ45 coupler (cross wired, 1-8, 8-1)
RJ45 - RJ45 coupler (straight wired, 1-1, 8-8)
RJ11 - RJ11 coupler (cross wired, 1-6, 6-1)
RJ11 - RJ11 coupler (straight wired, 1-1, 6-6)

#### Order Ref.

D 026
D 027
D 027S
A 012
A 012NS



**NO ACCOUNT! NO PROBLEM – We accept Visa or Mastercard**

## SECTION 2 - CTS Modular Products e-mod

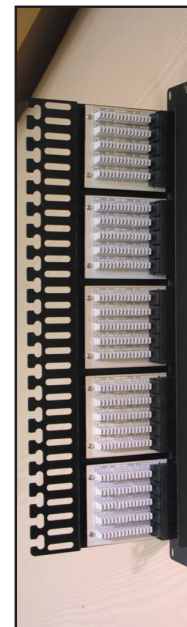
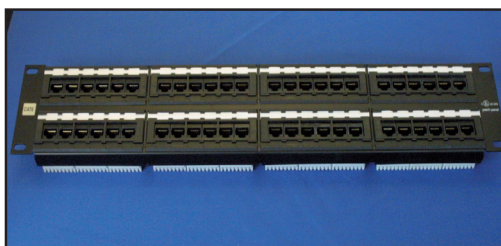
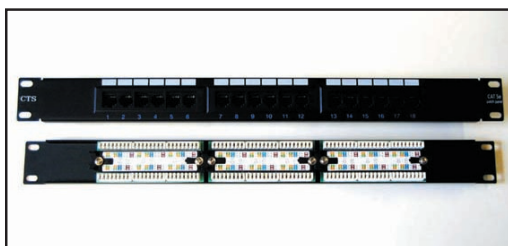
CTS own brand products for data, voice and media applications.

### e-mod PATCH PANELS

12 port mini patch panel, Cat5E, 1u high, 245mm wide  
 18 port, Cat5E, 1u high  
 24 port, Cat5E, 1u high  
 48 port, Cat5E, 2u high  
 24 port, Cat6, 1u high  
 48 port Cat6, 2u high  
 25 port Voice Panel, 1u high  
 50 port Voice Panel, 1u high  
*(all panels come individually boxed with tie wraps, cage nuts and have Krone style connector blocks)*

#### Order Ref

D 024CK  
 D 015CK  
 D 016CK  
 D 018CK  
 D 016C6  
 D 018C6  
 D 025  
 D 025A



### CABLE MANAGEMENT

#### HINGED WALL BRACKETS

2u high 600mm x 300mm, black  
 3u high 600mm x 300mm, black  
 4u high 600mm x 300mm, black  
 6u high 600mm x 300mm, black

#### Order Ref

E 174B  
 E 175B  
 E 176B  
 E 177B



#### CABLE TIDY

1u Brush strip panel, black  
 1u, 5 ring cable tidy panel, black

#### Order Ref

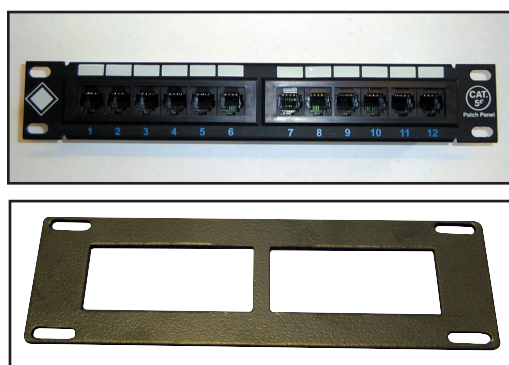
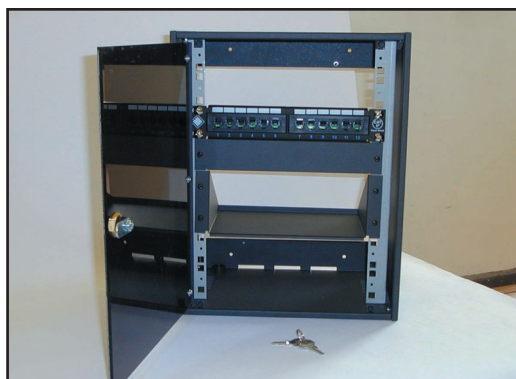
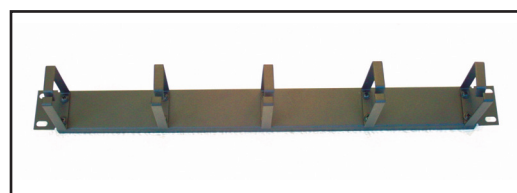
E 179  
 E 153A

#### SOHO SYSTEM

Mini cabinet, 8u x 300mm x 210mm  
 Cat 5e Patch panel, 245mm, 12 port  
 Shelf, 2u x 245mm x 145mm  
 Blank panel, 1u  
 Module Mounting Plate (10 modules)

#### Order Ref

E 182M  
 D 024CK  
 E 182S  
 E 182B  
 E 182T



**PRIORITY ORDER LINE - 01733-311592**



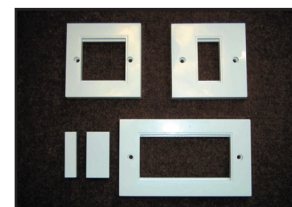
## SECTION 2 - CTS Modular Products e-mod



### e-mod FACE PLATES and BLANKS

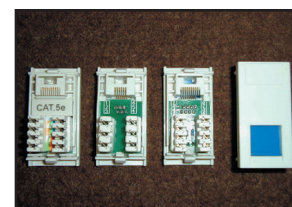
			Order Ref
Single faceplate, 1 gang, 1 module	86mm x 86mm		R 001CTS
Double faceplate, 1 gang, 2 module	86mm x 86mm		R 002CTS
Quad faceplate, 2 gang, 4 module	86mm x 147mm		R 003CTS
Half blank	12.5mm x 50mm	B	R 0031CTS
Single blank	25mm x 50mm	B	R 0021CTS
Double blank	50mm x 50mm	B	R 0032CTS
6c face plate, 1 gang, 1 module	86mm x 86mm		R 021
6c face plate, 1 gang, 2 module	86mm x 86mm		R 022
6c face plate, 2 gang, 4 module	86mm x 147mm		R 023

\*6c face plate accepts 6c modules - 37mm x 22 mm



### e-mod DATA MODULES

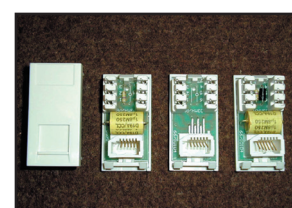
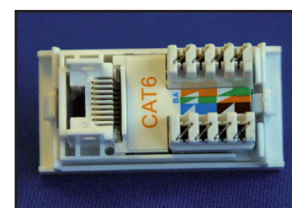
			Order Ref
RJ45 Cat5E module,	25mm x 50mm	B	R 004CTS
RJ45 Cat6 module,	25mm x 50mm	B	R 010CTS
ISDN terminated module, blue shutter	25mm x 50mm	B	R 006CTS
RJ11 module	25mm x 50mm	B	R 005CTS



### e-mod VOICE MODULES

			Order Ref
Full master module	25mm x 50mm	B	R 007CTS
Full master module, left hand	25mm x 50mm	B	R 007CTSLH
PABX master module	25mm x 50mm	B	R 008CTS
Secondary module	25mm x 50mm	B	R 009CTS

B = module available in black



**EXPORT ENQUIRIES WELCOME - 01733-311592**

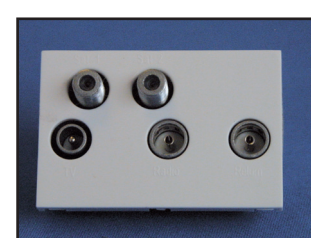
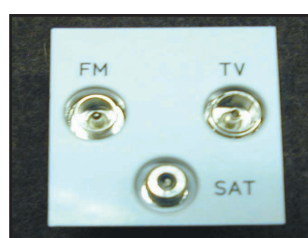
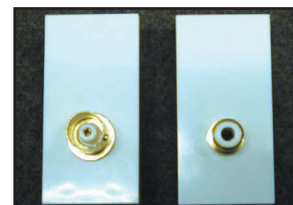
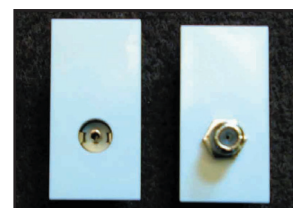


## SECTION 2 - CTS Modular Products e-mod

### e-mod MEDIA MODULES

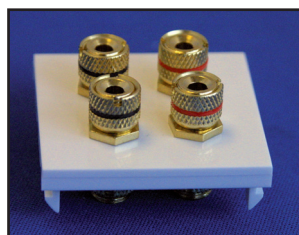
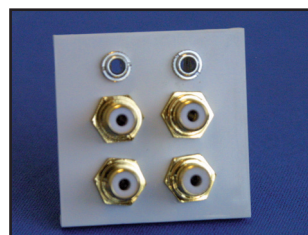
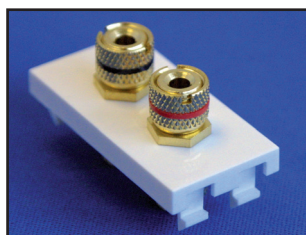
TV outlet, female, PAL coaxial	25mm x 50mm	B	R 009D
TV outlet, male PAL coaxial	25mm x 50mm	B	R 009E
TV outlet, female, screened return, PAL coaxial	25mm x 50mm	B	R 009F
Satellite TV outlet, F type	25mm x 50mm	B	R 009C
BNC module, female	25mm x 50mm	B	R 014
Phono (RCA) female	25mm x 50mm	B	R 015
Diplex module - TV/FM	50mm x 50mm	B	R 013DW
Triplex module - TV/Sat/FM	50mm x 50mm	B	R 013W
Quadplex module - 2 x Sat/TV/FM	50mm x 50mm	B	R 029W
Sky+ module - 2 x Sat/TV/FM/Screen Return	75mm x 50mm	B	R 028W

Order Ref



Speaker module - 2 binding post	25mm x 50mm	B	R 027
Speaker module - 4 binding post	50mm x 50mm	B	R 025W
Speaker module - 4 phono + 2 x 3.5mm socket	50mm x 50mm		R 026W

*B = module available in black*



**NO ACCOUNT! NO PROBLEM – We accept Visa or Mastercard**

## SECTION 2 - CTS Modular Products e-mod



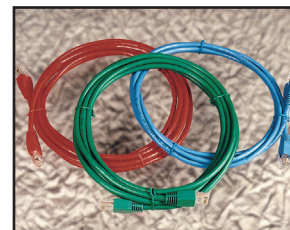
### e-mod CAT5E PATCH LEADS

24 AWG RJ45-RJ45 bootled patchleads, individually packaged, available in 7 different colours.

0.5 metre  
1.0 metre  
2.0 metre  
3.0 metre  
5.0 metre  
10.0 metre  
15.0 metre

Order Ref

DC 5E022  
DC 5E023  
DC 5E024  
DC 5E025  
DC 5E026  
DC 5E 027  
DC 5E 028



When ordering patch leads using order ref, please add appropriate colour code to end of order ref.

BL=blue, R=red, Y=yellow, GR=green, GY=grey, BLK=black

e.g. 2 metre green patchlead would be order ref: DC 5E024GR

Non-standard lengths also available (e.g. 1.5 mtr/6mtr/8mtr/12/mtr/20mtr/25mtr. etc) please call sales office with your requirements for a quotation by return.

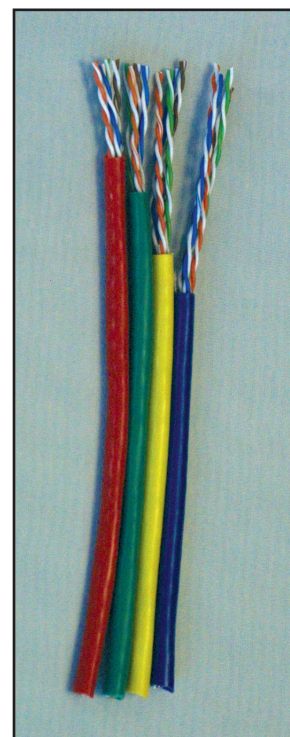
### e-mod CAT6 PATCH LEADS

24 AWG RJ45-RJ45 bootled patchleads, individually packaged, available in 7 different colours.

0.5 metre  
1.0 metre  
2.0 metre  
3.0 metre  
5.0 metre

Order Ref

DC 6 022  
DC 6 023  
DC 6 024  
DC 6 025  
DC 6 026



### e-mod CABLE

4 pair, UTP, 24 awg, solid conductor, 305 metre box, grey  
4 pair, UTP, 24 awg, solid conductor, 305 metre box, green  
4 pair, UTP, 24 awg, solid conductor, 305 metre box, yellow  
4 pair, UTP, 24 awg, solid conductor, 305 metre box, red  
4 pair, UTP, 24 awg, solid conductor, 305 metre box, blue  
4 pair, UTP/LSF, 24 awg, solid conductor, 305 metre box  
4 pair, UTP/EXTERNAL, 24 awg, solid conductor, 500 or 1000 metre reel  
25 pair, UTP/EXTERNAL, 24 awg, solid conductor, cut to length  
(external cable cut to length if required)

Order Ref

C 033CTS  
C 033GN  
C 033Y  
C 033R  
C 033BL  
C 033CTLSF  
C 033G1  
C 033I



**PRIORITY FAXLINE - 01733-344775**

## SECTION 2 - PRESSAC Products

### RJ45 Sockets - a range of quality sockets manufactured by PRESSAC

RJ45 single shuttered outlet, Krone IDC connectors  
RJ45 double shuttered outlet, Krone IDC connectors  
RJ45/Voice 601A dual shuttered outlet, Krone IDC connectors

Order Ref.  
D 008P  
D 009P  
D 010P

**Press-Link Modular System:** a range of modules fitting an aperture 50mm x 25mm and having Krone style IDC terminations (voice modules) or KATT terminations (data modules)

**FACEPLATES** - Single, 1 gang  
Double, 1 gang  
Quad, 2 gang

Order Ref.  
R 001  
R 002  
R 003

**MODULES** - RJ45 Cat 5E  
RJ45 Cat 5E, shielded  
RJ45 Cat 6  
RJ11  
Master voice  
PBX master  
Secondary  
ISDN

Order Ref.  
R 004  
R 004CP  
R 010A  
R 005  
R 007  
R 008  
R 009  
R 006

**BLANKING PLATES** - Half single  
Single  
Double

Order Ref.  
R 001A  
R 002A  
R 003A

### PATCH PANELS -manufactured by PRESSAC

Cat 5E UTP Patch panels - designed to TIA/EIA 568-A ISO 11801, each panel comes complete with cable management bars, cage nuts & bolts, re-numbering strips, cable ties and features KATT IDC termination blocks which accept Krone or AT&T 110 punch down tools. Fits standard 19" rack.

16 port, 1u high  
24 port, 1u high  
32 port, 2u high  
48 port, 2u high

Order Ref.  
D 015P  
D 016P  
D 017P  
D 018P

### LJ6C MODULAR RANGE - 37mm x 22mm MODULES

Modules RJ45 Cat 5E  
RJ45 Cat 6

R 004A  
R 010AT6

Faceplate double, 1 gang, 2 module

R 004A1

Blank single, 37mm x 22mm

R 004A2

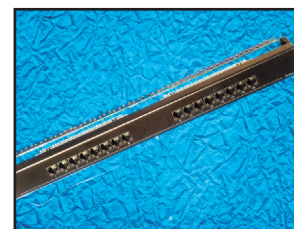
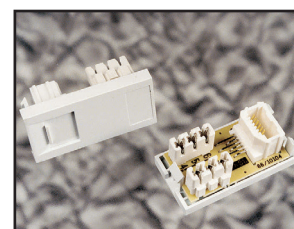
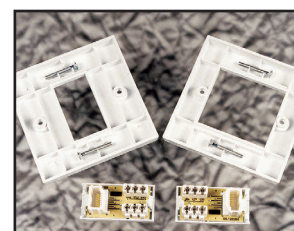
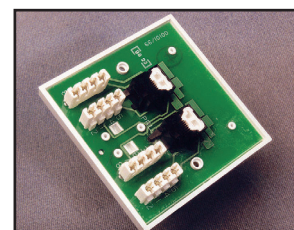
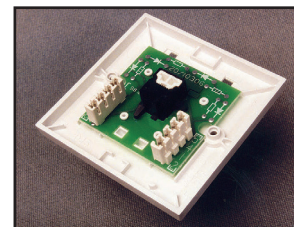
### SPLITTER

ADSL Splitter, BT approved, fits directly onto NTE5A socket

A 087P

Also available from the Pressac range - BNC and ST modules to fit the Press-Snap modular system, fibre optic termination kit (see installation accessories section) RJ45 Cat 5E Keystone modules, patch panels, and the Zeta 6 range of Cat 6 products.

**15 YEAR WARRANTY** is available to Pressac registered installers. For further details and to register interest in this scheme telephone 01733-311592.





## SECTION 2 - Data Products

### DECORATIVE METAL FACEPLATES

A range of faceplates which accept modules from the CTS range. These high quality metal plates are supplied to order.

A variety of finishes are available:

Brass, Georgian style – rope edge, 1 gang, 2 module  
 Brass, Victorian style – plain edge, 1 gang, 2 module  
 Satin chrome, Victorian style – plain edge, 1 gang, 2 module  
 Stainless steel, Victorian style – plain edge, 1 gang, 2 module  
 Satin chrome, Victorian style – plain edge, 2 gang, 4 module  
 Brass, Victorian style – plain edge, 2 gang, 4 module

Order Ref.

D 028

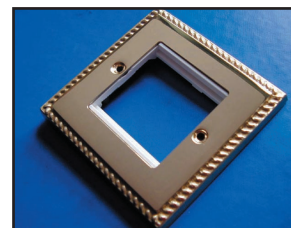
D 0281

D 0282

D 028ST

D 0282Q

D 028Q



Modules supplied separately in white or black, see page 9.

### MODULAR FRAMES

Plastic modular frames to fit metal plates and accommodate the e-mod range of modules.

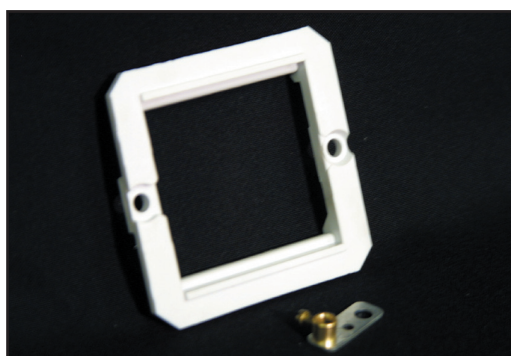
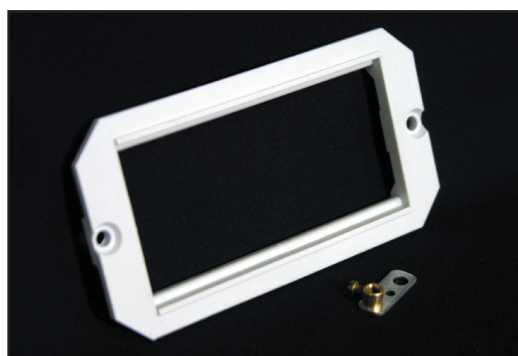
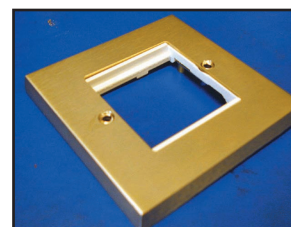
Modular frame, 74mm x 74mm, 2 module, white  
 Modular frame, 74mm x 74mm, 2 module, black  
 Modular frame, 148mm x 74mm, 4 module, white  
 Modular frame, 148mm x 74mm, 4 module, black

R 011

R 011B

R 011QW

R 011QB



### RJ - BT Adaptors - a series of baluns manufactured by CTSM Ltd.

#### RJ45 - BT adaptors - c/w 100mm leads.

RJ45 - BT full master  
 RJ45 - BT PABX master  
 RJ45 - BT secondary (slave)  
 RJ45 - ISDN

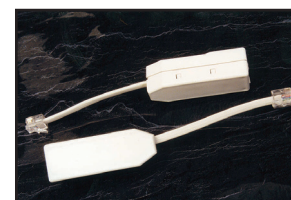
Order Ref.

D 004

D 005

D 006

D 005IDSN



#### RJ11 - BT adaptors - c/w 100mm leads

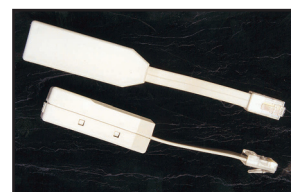
RJ11 - BT full master  
 RJ11 - BT PABX master  
 RJ11 - BT secondary (slave)

Order Ref.

D 001

D 002

D 003



Should you require an alternative wiring scheme or different length of lead on the adaptor please contact our sales office and we will quote immediately for your specific requirements. No minimum order quantity for this service.

**ORDER BEFORE 4PM - FOR SAME DAY DESPATCH**

## SECTION 2 - Enclosures

All dimensions in millimetres.

### Cabinets - a range of floor standing and wall mounting cabinets.

#### Floor Standing

12u x 600w x 600d  
15u x 600w x 600d  
18u x 600w x 600d  
21u x 600w x 600d  
27u x 600w x 600d  
33u x 600w x 600d  
39u x 600w x 600d  
42u x 600w x 600d  
45u x 600w x 600d

12u x 600w x 800d  
15u x 600w x 800d  
18u x 600w x 800d  
21u x 600w x 800d  
27u x 600w x 800d  
33u x 600w x 800d  
39u x 600w x 800d  
42u x 600w x 800d  
45u x 600w x 800d

27u x 800w x 600d  
39u x 800w x 600d  
42u x 800w x 600d  
45u x 800w x 600d

21u x 800w x 800d  
27u x 800w x 800d  
39u x 800w x 800d  
42u x 800w x 800d  
45u x 800w x 800d

#### Order Ref.

E 110  
E 1116  
E 112A  
E 001  
E 092  
E 002A  
E 093  
E 094  
E 095

E 11068  
E 1118  
E 1128  
E 0018  
E 092A  
E 002A68  
E 097  
E 098  
E 099

E 100  
E 101  
E 102  
E 011

E 00188  
E 104  
E 105  
E 106  
E 107

Floor standing cabinets include as standard, 4 adjustable mounting profiles, removable steel panels, lockable steel framed glass door, steel rear door, raised top for ventilation, 4 adjustable feet, earth bonding kit and cage nuts.

#### Wall Mounting

6u x 600w x 450d  
9u x 600w x 450d  
12u x 600w x 450d  
15u x 600w x 450d  
18u x 600w x 450d  
21u x 600w x 450d  
24u x 600w x 450d

6u x 700w x 500d  
9u x 700w x 500d  
12u x 700w x 500d  
15u x 700w x 500d  
18u x 700w x 500d

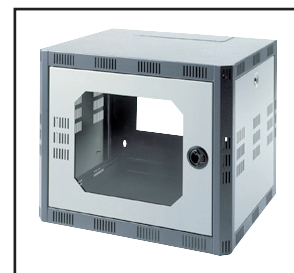
#### Order Ref.

E 108  
E 109  
E 109A  
E 111  
E 112  
E 21645  
E 24W

E 113  
E 114  
E 115  
E 116  
E 117

Wall mounting cabinets include as standard, 2 adjustable mounting profiles, lockable front Perspex door, universal gland plates top and bottom, earth bonding kit and cage nuts. 500mm deep versions also include vertical cable management and lockable steel side panels.

600mm wall mounting cabinets also available in 500mm deep and 350mm deep versions – call sales office for price and delivery. Freedom budget range of flat pack, 'no tools required', 600mm x 500mm build 'in situ' wall cabinets also available – ring for details.

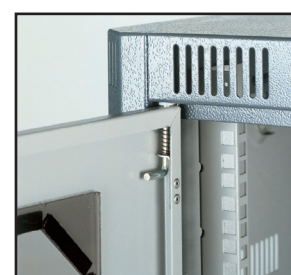
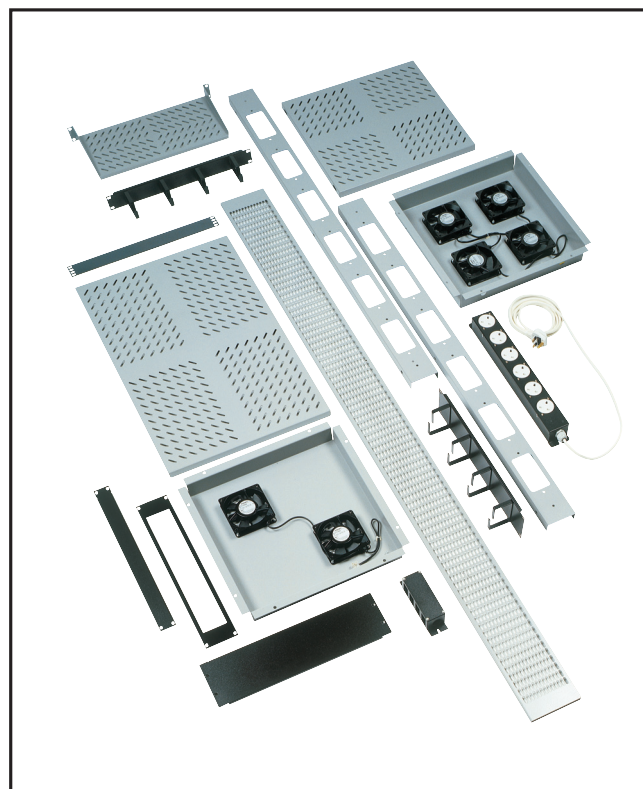


## SECTION 2 - Cabinet Accessories

All dimensions in millimetres.

Cabinet Accessories - to complement our range of cabinets.

			Order Ref.	
Cable tray	100mm	27u	E 118	
		39u	E 119	
		42u	E 120	
		45u	E 121	
Cable tray	150mm	21u	E 1216	
		27u	E 122	
		39u	E 123	
		42u	E 124	
		45u	E 125	
Cable tray	225mm	27u	E 126	
		39u	E 127	
		42u	E 128	
		45u	E 129	
Cable tray	300mm	27u	E 130	
		39u	E 131	
		42u	E 132	
		45u	E 133	
Shelves:	19" plain vent	450mm deep	E 134	
	19" plain vent	570mm deep	E 135	
	Plain vented, full width	450mm deep	E 046	
	Plain vented, full width	570mm deep	E 047	
	19" telescopic, vented	450mm deep	E 138	
	19" telescopic, vented	570mm deep	E 139	
	19" telescopic, vented	720mm deep	E 137	
	19" front mounted, 1u x 200mm		E 140	
	19" front mounted, 1u x 300mm		E 044	
	19" front mounted, 2u x 400mm		E 141	
Power distribution units:	4 way vertical		E 037	
	5 way vertical		E 0375	
	6 way vertical		E 038A	
	8 way vertical		E 039	
	10 way vertical		E 039C	
	12 way vertical		E 040	
	4 way horizontal		E 037A	
	6 way horizontal		E 038	
	8 way horizontal		E 039A	
	12 way horizontal		E 040A	
2u rack mount units:	4 way horizontal		E 161	
	5 way horizontal		E 162	
	6 way horizontal		E 163	



**SCHEDULED & CALL-OFF ORDERS WELCOME**



## SECTION 2 - Cabinet Accessories

*All dimensions in millimetres.*

### Cabinets - Accessories continued

	Order Ref.
2 way roof mounted fan tray	E 143
4 way roof mounted fan tray	E 142
6 way roof mounted fan tray	E 1426
2 way rack mounted fan tray	E 034
4 way rack mounted fan tray	E 161
6 way rack mounted fan tray	E 1616
Plinths:	
600mm x 600mm	E 144
600mm x 800mm	E 145
800mm x 600mm	E 146
800mm x 800mm	E 147
Heavy duty castors	E 149
Baying kit	E 150
Earth bonding kit	E 152
1u horizontal cable tidies	E 153A
Jumper rings (70mm x 70mm)	E 154
1u jumper rings (40mm x 60mm)	E 063
Cage nuts and bolts (pack of 50)	E 151A

### Server Cabinets - a range of floor standing server cabinets

*All dimensions in millimetres.*

	Order Ref.
27u x 600w x 900d	E 092S
39u x 800w x 1000d	E 10581
39u x 800w x 900d	E 10589
42u x 600w x 1000d	E 09810
42u x 800w x 900d	E 10689
45u x 600w x 900d	E 09969
45u x 800w x 900d	E 09989
45u x 800w x 1000d	E 09981



### Server Cabinet Accessories - to complement our range of server cabinets.

	Order Ref.
Plinths:	
600mm x 900mm, pull out stabilising arms	E 190
800mm x 900mm, pull out stabilising arms	E 191
600mm x 900mm, bolt on stabilising arms	E 192
800mm x 900mm, bolt on stabilising arms	E 193
Shelves:	
Heavy duty shelf, 450mm deep	E 134HD
Heavy duty shelf, 570mm deep	E135HD

*Two styles of server cabinet are available, one similar to standard floor standing cabinets but with increased load carrying capacity. The other version offers 180° opening lift off front door and slide out side panels, which can be removed when bayed and are locked in place by the door.*

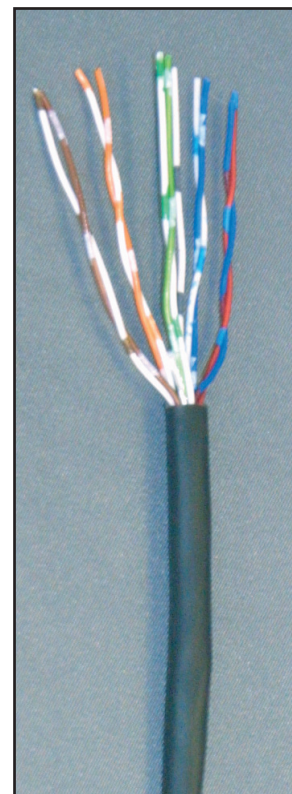
## SECTION 3 - Voice and Data Cables

**CW1308 internal telephone cable - twisted multipair cable, 0.5mm diameter solid copper conductor, pvc insulated and pvc sheathed in white or black.**

2 pair black, 100 metres  
2 pair black, 200 metres  
2 pair white, 100 metres  
2 pair white, 200 metres  
3 pair black, 100 metres  
3 pair black, 200 metres  
3 pair white, 100 metres  
3 pair white, 200 metres  
4 pair black, 100 metres  
4 pair black, 200 metres  
4 pair white, 100 metres  
4 pair white, 200 metres  
6 pair black, 100 metres  
6 pair black, 200 metres  
6 pair white, 100 metres  
6 pair white, 200 metres  
10 pair black, 100 metres  
10 pair black, 200 metres  
10 pair white, 100 metres  
10 pair white, 200 metres  
10 pair + E black, 100 metres  
10 pair + E black, 200 metres  
10 pair + E white, 100 metres  
10 pair + E white, 200 metres  
20 pair black, 100 metres  
20 pair black, 200 metres  
20 pair white, 100 metres  
20 pair white, 200 metres  
20 pair + E black, 100 metres  
20 pair + E black, 200 metres  
20 pair + E white, 100 metres  
20 pair + E white, 200 metres  
25 pair black, 100 & 200 metres or cut to length  
25 pair white, 100 & 200 metres or cut to length  
32 pair + E white, cut to length  
40 pair + E white, 100 & 200 metres or cut to length  
50 pair + E black, 100 & 200 metres or cut to length  
50 pair + E white, 100 & 200 metres or cut to length  
100 pair + E black, cut to length  
100 pair + E white, cut to length  
200 pair + E black, cut to length  
200 pair + E white, cut to length  
320 pair + E white, cut to length

*Order Ref.*

C 001B1  
C 001B2  
C 002W1  
C 002W2  
C 003B1  
C 003B2  
C 003W1  
C 003W2  
C 004B1  
C 004B2  
C 004W1  
C 004W2  
C 005B1  
C 005B2  
C 005W1  
C 005W2  
C 006B1  
C 006B2  
C 006W1  
C 006W2  
C 007BE1  
C 007BE2  
C 007WE1  
C 007WE2  
C 008B1  
C 008B2  
C 008W1  
C 008W2  
C 009BE1  
C 009BE2  
C 009WE1  
C 009WE2  
C 010B  
C 010A  
C 010C  
C 011  
C 012BE  
C 012WE  
C 013BE  
C 013WE  
C 014BE  
C 014WE  
C 014ZE



**Other CW1308 pair combinations and colours available to order (e.g. 60, 80, 160 pairs in black or white) - telephone the sales desk for price and delivery.**

**EXPORT ENQUIRIES WELCOME - 01733-311592**



## SECTION 3 - Voice and Data Cables

**CW 1308B - internal/external telephone cable 0.5mm diameter solid copper conductor pvc insulated, insulated earth wire, PETP taped, tinned copper drainwire, aluminium taped moisture barrier, black LSF outer sheath.**

10 pair + earth, 1Km and 500 metre reels or cut to length  
20 pair + earth, 1Km and 500 metre reels or cut to length  
50 pair + earth, 1Km and 500 metre reels or cut to length  
100 pair + earth, 1Km and 500 metre reels or cut to length  
200 pair + earth, 1Km and 500 metre reels or cut to length  
320 pair + earth, 1Km and 500 metre reels or cut to length

*Order Ref.*  
C 099AGC  
C 099CGC  
C 099DGC  
C 099D1GC  
C 099D2  
C 099D3



**CW 1128 external telephone cables - multipair, 0.5mm solid plain copper conductor, pvc insulated, jel filled, black polyethylene outer sheath. Suitable for installation in ducts or directly buried in suitably prepared ground.**

5 pair, 1,000 & 500 metre drums or cut to length  
10 pair, 1,000 & 500 metre drums or cut to length  
20 pair, 1,000 & 500 metre drums or cut to length  
30 pair, 500 metre drums or cut to length  
50 pair, 500 metre drums or cut to length  
100 pair, 500 metre drums or cut to length

*Order Ref.*  
C 019  
C 020  
C 021  
C 022  
C 023  
C 024

**CW 1128 2 pair available to order, also 0.9mm conductor versions of above are available to order, subject to minimum order quantity. Please check with sales office (01733-311592) when you have a requirement.**

**PRIORITY ORDER LINE - 01733-311592**

## SECTION 3 - Voice and Data Cables

**Screened internal telephone cable - to CW1308 (AFAA) twisted multipair cable, 0.5mm diameter solid copper conductor, pvc insulated, aluminium foil screened, white pvc sheath.**

2 pair screened, 500 metre reels or cut to length  
3 pair screened, 500 metre reels or cut to length  
4 pair screened, 500 metre reels or cut to length  
10 pair + E screened, 100 & 200 metre reels  
20 pair + E screened, 100 & 200 metre reels  
25 pair screened 100 & 200 metre reels

*Order Ref.*  
C 002WS1  
C 003WS  
C 004WS  
C 007WS  
C 009WS  
C 009WS1

**CW 1600 - limited fire hazard telephone cable -multipair, 0.5mm diameter, solid copper conductor, LSOH insulated, aluminium screen, fire barrier tape, LSOH outer sheath.**

4 pair, 100, 200 & 500 metre reels  
10 pair + E , 500 metre reels or cut to length  
20 pair + E, 500 metre reels or cut to length

*Order Ref.*  
C 078A  
C 078B  
C 078C

**CW 1311 - line cordage - copper wire conductor version for ease of termination, pvc insulated parallel cores, oversheathed in pvc with a 3 core cross section.**

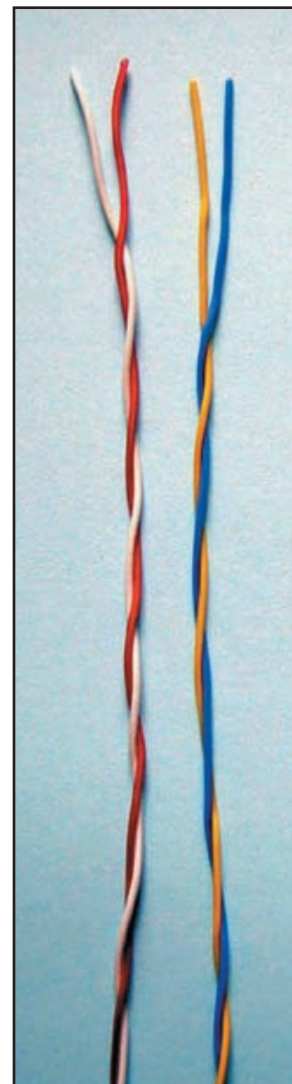
4 way, black  
4 way, grey  
4 way, white  
6 way, grey  
6 way, white  
6 way, black

*Order Ref.*  
C 017B  
C 017G  
C 017W  
C 018G  
C 018W  
C 018B

**CW 1109 - jumper wire - 0.5mm solid copper conductor, pvc insulated.**

2 wire, blue/yellow, 100, 200 & 500 metre reels  
2 wire, green/black, 100, 200 & 500 metre reels  
2 wire, red/white, 100, 200 & 500 metre reels  
2 wire, pink/grey, 100, 200 & 500 metre reels  
2 wire, blue/white, 100, 200 & 500 metre reels  
2 wire, red/black, 100, 200 & 500 metre reels  
2 wire, black/yellow, 100, 200 & 500 metre reels  
4 wire , red/white/green/black, 200 & 500 metre reels  
5 wire, orange white/green/white blue/blue white/white orange, 500 metre reels  
5 wire, red/white/green/blue/yellow, 500 metre reels

*Order Ref.*  
C 016BY  
C 016GB  
C 016RW  
C 015PG  
C 016BW  
C 016RBK  
C 016YB  
C 015A  
C 015  
C 015M



Also stocked – **CW1423** pvc insulated, 0.5mm tinned annealed copper conductor in 2 and 4 wire configurations. 200 & 500 metre reels. This replaces **CW1257** jumper wire.

## SECTION 3 - Voice and Data Cables

**CW 1044 - functional earth wire - plain copper conductor, cream pvc sheath, supplied on 100 metre reels.**

1.5mm	Order Ref.
2.5mm	C 051
4.0mm	C 051A
6.0mm	C 051B
16.0mm	C 051C
	C 051D

**Dropwire to CW 247 & CW 1378 - 2 core, 2 pair, 3 pair and 4 pair cable, 0.5mm solid plain copper conductor, pvc insulated, polyethylene outer sheath. The cables incorporate steel strength members and are therefore self-supporting (not dropwire 6).**

Dropwire no. 6, 2 core, to CW 247, 100 & 200 metre reels	Order Ref.
Dropwire no. 10, 2 pair, to CW 1378, 200 & 350 metre reels	C 025
Dropwire no. 11, 3 pair, to CW 1378, 200 metre reels	C 026
Dropwire no. 14, 4 pair, to CW 1378, 200 metre reels	C 026A
See Section 6 for dropwire clamps and brackets.	C 0264A

**CTS Spec. cable - 2 and 3 pair cable to CW1308 but with white P.E. inner sheath and black or brown outer sheath. An internal/external cable.**

2 pair black, 200 metre reels	Order Ref.
2 pair brown, 200 metre reels	C 038B
2 pair white, 200 metre reels	C 038BR
3 pair black, 200 metre reels	C 038W
	C 037B

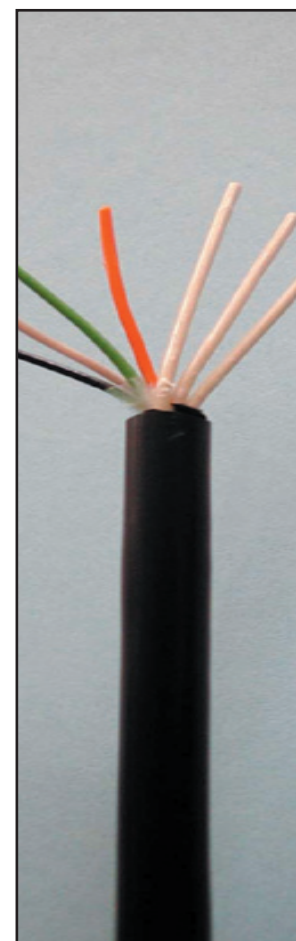
**Armoured telephone cable to ESI 09-6 - multipair, 0.9mm diameter, solid copper conductor, pvc insulated, polyester taped, black pvc sheath, galvanised steel wire armour and black pvc overall sheath. Suitable for ducts or direct burial in prepared ground.**

2 pair, cut to length	Order Ref.
5 pair, cut to length	C 079A
10 pair, cut to length	C 079B
20 pair, cut to length	C 079C
30 pair, cut to length	C 079D
50 pair, cut to length	C 079E
100 pair, cut to length	C 079F
	C 079G

**ESI cables also available with 0.6mm diameter conductor and in 0.9mm version screened and armoured. Other pair sizes available, telephone 01733-311592 for further information.**

**CW 1293 -internal telephone cable - multipair, 0.5mm diameter solid copper conductor, pvc insulated, pvc sheath in cream or grey, 100 metre or 200 metre reels.**

1 pair	Order Ref.
Quad	C 080A
3 pair	C 080B
4 pair	C 080C
6 pair	C 080D
15 pair	C 080E
20 pair	C 080F
25 pair	C 080G
50 pair	C 080H
	C 080I





## SECTION 3 - Voice and Data Cables

**Co-axial cable - to CW 1229C and CW 1383A - plain copper conductor, twin copper braid screened, white pvc outer sheath 75 ohm impedance..**

BT2002 stranded conductor (7/0.2mm) 500 metre reels  
BT2003 solid conductor (1/0.61mm) 500 metre reels  
BT 3002 solid conductor (1/0.31mm) 500 metre reels  
BT 3002 8 core and 16 core versions also supplied

*Order Ref.*

C 027B

C 027A

C 0275

If lengths other than 500 metres required, please check availability with sales office 01733-311592.

**Data co-axials - 50 ohm and 93 ohm co-axials.**

RG 58 c/u, 50 ohm, single braid screen, 500 metre reels  
RG 58 c/u LSF, 50 ohm, single braid screen, 250 metre reels  
9907 equivalent, 50 ohm, thin ethernet, 500 metre reels  
9880 equivalent, 50 ohm, thick ethernet, 500 metre reels  
RG 62 a/u, 93 ohm, 250 and 500 metre reels

*Order Ref.*

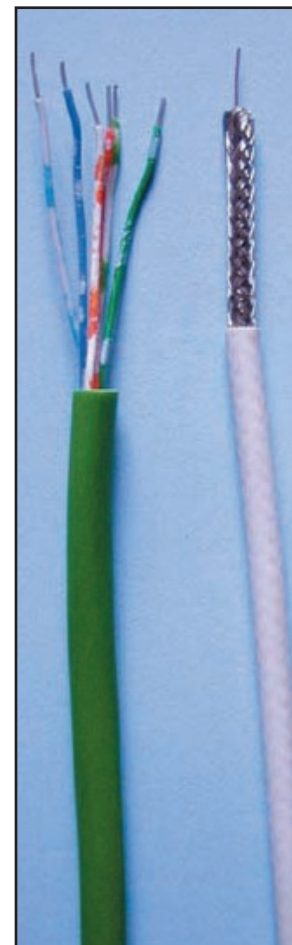
C 086B

C 086A

C 087

C 088

C 089



We can offer a cable design and manufacture service.  
If you require an existing cable in a non-standard colour or perhaps a different outer sheath then we can quote, or if you require printing or embossing on the cable for identification purposes, we can quote.  
Ring our sales office on 01733-311592 with your exact requirements and we will be pleased to quote.

We reserve the right to change specifications of cables without prior notice in line with any new specifications and changes which may be introduced.

**ORDER BEFORE 4PM - FOR SAME DAY DESPATCH**

## SECTION 3 - Voice and Data Cables

**Category 5E data cables** - high quality cables often exceeding the requirements of Cat. 5E, manufactured by a leading French manufacturer - **ACOME**.

**24 AWG solid conductor (unless otherwise indicated.) 100 ohm, 250MHz.**

4 pair UTP, pvc, 305 metre box  
4 pair UTP, LSOH, purple, 305 metre box  
4 pair UTP, LSOH, ivory, 305 metre box  
4 pair FTP, pvc, 305 metre box  
4 pair FTP, pvc, 500 metre reel  
4 pair FTP, LSOH, 500 metre reel  
2 x 4 pair UTP, pvc, 500 metre reel  
4 pair UTP, pvc, stranded conductor, 500 metre reel

*Order Ref.*

C 033D  
C 033APE  
C 033AIE  
C 032AB  
C 032BE  
C 033AE  
C 033A2E  
C 033FE



**Also included in the ACOME range are 25, 50, 100 and 200 pair cables together with bundled 4 pair cable, up to 8 x 4 pairs in UTP, FTP and LSOH versions. Call 01733-311592 for information on price and delivery lead times.**

**350 MHz Cable (Cat 6) – available in UTP, FTP (overall foil screened) or SFTP (overall foil and braid) versions with either pvc or LSOH outer jacket. 24 AWG solid conductor, 100 ohm.**

4 pair, UTP, pvc, 1,000 metre reel  
4 pair, UTP, pvc, 305 metre box  
4 pair, UTP, LSOH, 1,000 metre reel  
4 pair, UTP, LSOH, 305 metre box  
4 pair, FTP, pvc, 500 metre reel  
4 pair, FTP, LSOH, 500 metre reel  
4 pair, SFTP, pvc, 500 metre reel  
4 pair, SFTP, LSOH, 500 metre reel

*Order Ref.*

C 083C  
C 083D  
C 083E  
C 083F  
C 082A  
C 082B  
C 083A  
C 083B

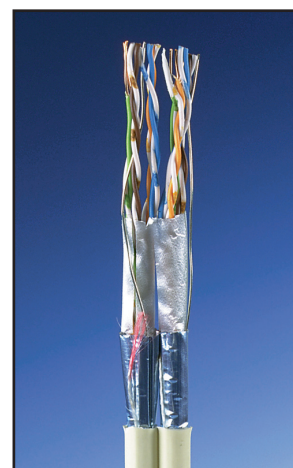


**600MHz. Cable** - available in SSTP (foil screened twisted pairs with overall braid screen) in both pvc and LSOH outer jacket. 23 AWG solid (0.6) conductor, 100 ohm.

4 pair, SSTP, pvc, 1,000 metre reel  
4 pair, SSTP, LSOH, 1,000 metre reel

*Order Ref.*

C 084  
C 084A



**1 GHz. Cable** - available in SSTP, LSOH version as standard. 22 AWG (0.64) conductor, 100 ohm.

4 pair, SSTP, LSOH, 1,000 metre reel

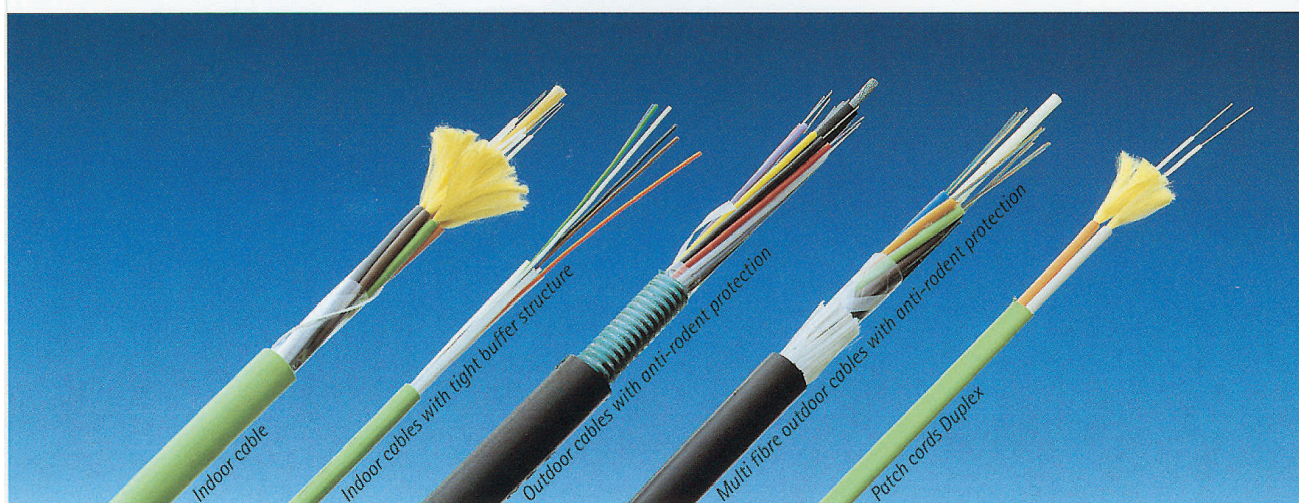
*Order Ref.*

C 085

**Specification sheets and test certificates available on request.**

### ACOLAN® Plus Fibre optics

The ACOPTIC cables and patch leads have been developed to ease installation (reduce the time of installation, to be able to easily identify individual fibres and tubes, direct connect, accessibility of the fibres...). The fibres are in standard version multimode 62.2/125 used at 850 nm and 1,300 nm and conform to current European norms.



**Fibre Optic Cable - manufactured to a high quality by ACOME. Multimode, 62.5/125 data cable, LSOH outer jacket.**

**Internal/External - central loose tube structure.**

4 fibre  
6 fibre  
8 fibre  
12 fibre

Order Ref.  
C 090A  
C 090B  
C 090C  
C 090D

**Internal/External - glass yarn armoured, 1 fibre/tube.**

2 fibre  
4 fibre  
6 fibre  
8 fibre  
10 fibre  
12 fibre

Order Ref.  
C 091A  
C 091B  
C 091C  
C 091D  
C 091E  
C 091F

**Internal/External - tight buffer, 900u, breakout cable.**

6 fibre  
8 fibre  
10 fibre  
12 fibre

Order Ref.  
C 092A  
C 092B  
C 092C  
C 092D

All above cables cut to length or supplied on 1km or 2km drums. Lead time varies according to type and quantity of cable. Full specification sheets and test data available on request.

Singlemode 8/125, metallic armoured cable and cables with greater number of cores than those listed, also available to order. Please call 01733-311592 for current stock, price and delivery times.

**NO ACCOUNT! NO PROBLEM – We accept Visa or Mastercard**



## SECTION 4 - Security Cables & Connectors

**Alarm cables - unscreened 7/0.20mm tinned copper conductor, pvc insulated, white pvc outer sheath . Maximum voltage 50V r.m.s. maximum current per core 1 amp. To BS 4737.**

4 core, 100 metre reels  
6 core, 100 metre reels  
8 core, 100 metre reels  
12 core, 100 metre reels

Order Ref.  
C 0584  
C0586  
C 0588  
C 05812

**Alarm cables -screened 7/0.20mm tinned copper conductor, pvc insulated, overall aluminium foil screen, white pvc outer sheath. Voltage & current as per unscreened.**

4 core, 100 metre reels  
6 core, 100 metre reels  
8 core, 100 metre reels  
12 core, 100 metre reels

Order Ref.  
C 0594  
C0596  
C0598  
C05912

**If you require either screened or unscreened cables in longer lengths or different sheath colours, please contact our sales department on 01733-311592.**

**Alarm cables - external 7/0.20mm, tinned copper conductor, pvc insulated, black polyethylene or polypropylene outer sheath. These cables are suitable for use in ducts or directly buried in prepared ground.**

6 core direct burial foil screened, 500 metre reels or cut to length  
12 core direct burial foil screened, 500 metre reels or cut to length

Order Ref.  
C 0606SPP5  
C 06012SPP5

6 core duct grade foil screened, 500 metre reels or cut to length  
12 core duct grade foil screened, 500 metre reels or cut to length

C 0606SPE  
C 06012SPE

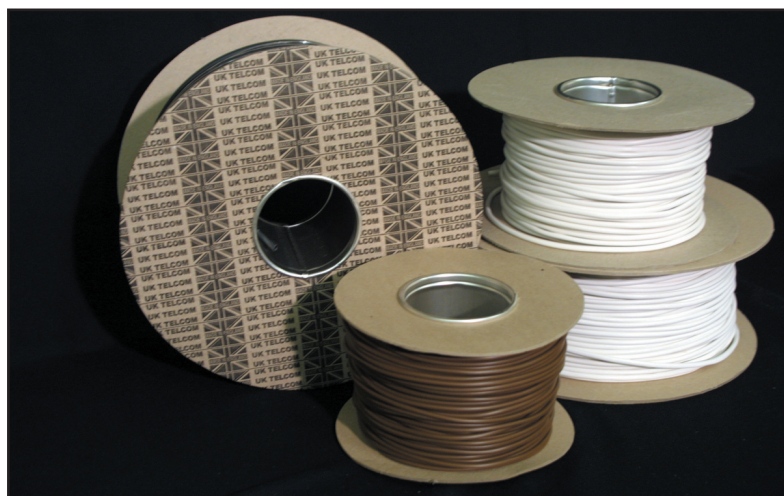
6 core duct grade unscreened, 500 metre reels or cut to length  
12 core duct grade unscreened, 500 metre reels or cut to length  
8 core duct grade unscreened, 500 metre reels or cut to length

C 0606E  
C 06012E  
C 0608E

**Limited fire hazard cables - 7/0.20mm, tinned copper conductor, pvc insulated, white LSF outer sheath.**

6 core, 100 metre reels  
8 core, 100 metre reels  
12 core, 100 metre reels

Order Ref.  
C 0616  
C 0618  
C 05812L



**SCHEDULED & CALL-OFF ORDERS WELCOME**

## SECTION 4 - Security Cables & Connectors

### Table of cable run distances

The following table gives an indication of the lengths over which a particular co-axial cable can be run, without the need to use launch amplifiers, on a CCTV installation. This table is intended to be a guide and is given in good faith, based on our knowledge of the cables. We do not give a guarantee as to the accuracy of this table, due to factors outside our control and peculiar to each individual installation. The type of outer sheath, pvc, polyethylene or non-metallic armour is not stated as this has no effect on the results.

CABLE TYPE Ref. no.	ATTENUATION (dB/100 mtrs.)					RUN DISTANCE(mtrs.)	
	5MHz	10MHz	30MHz	50MHz	100MHz	6dB loss	9dB loss
<b>RG 59 c/u</b>	2.2	3.2	5.8	7.5	10.9	270	390
<b>URM 70</b>	2.3	4.7	8.2	10.6	15.2	250	380
<b>CO-AX 12 PE</b>	1.6	2.4	4.4	6.1	8.1	330	500
<b>RG 6</b>	1.8	2.4	3.7	4.4	6.1	330	500
<b>CT 100 (or equivalent)</b>	1.3	1.9	3.1	4.3	6.1	450	680
<b>RG 11 a/u</b>	1.2	2.0	3.6	4.7	6.9	490	740
<b>CT 125 (or equivalent)</b>	1.1	1.5	2.5	3.4	4.9	540	810
<b>CT 167 (or equivalent)</b>	0.8	1.1	1.9	2.6	3.7	740	1100
<b>CT 233 (or equivalent)</b>	0.6	0.8	1.4	1.9	2.7	990	1480



Further technical information, if required, can be obtained from our sales office on 01733-311592. Specification and test information supplied to order and for your export sales, Certificates of Conformity can be issued.

**PRIORITY ORDER LINE - 01733-311592**



## SECTION 4 - Security Cables & Connectors

**75 ohm co-ax cable - used for CCTV and TV distribution.**

**RG 59 - c/u version has plain copper 1/0.58mm diameter centre conductor, solid dielectric, plain copper braid screen to Mil C-17, pvc outer sheath. RG 59 c/u PE is suitable for external use, including direct burial in suitably prepared ground and the LSF version is the low smoke and fume internal cable.**

RG 59 c/u, black, 100 metres  
RG 59 c/u, black, 200 metres  
RG 59 c/u, black, 250 metres  
RG 59 c/u, black, 500 metres  
RG 59 c/u, white, 100 metres  
RG 59 c/u, white, 200 metres  
RG 59 c/u, white, 250 metres  
RG 59 c/u, white, 500 metres  
RG 59 c/u, PE, black, 250 metres  
RG 59 LSF, black, 500 metres  
RG 59 LSF, black, 200 metres

*Order Ref.*

C 039B1  
C 039B2  
C 039B25  
C 039B5  
C 040W1  
C 040W2  
C 040W25  
C 040W5  
C 041B25  
C041LSF5  
C 041LSF2

**RG 59 - b/u version has copper clad steel 1/0.58mm diameter centre conductor, solid dielectric, plain copper braid screen (80/0.10mm) pvc outer sheath.**

RG 59 b/u, black, 100 metres  
RG 59 b/u, black, 200 metres  
RG 59 b/u, black, 500 metres  
RG 59 b/u, white, 100 metres

*Order Ref.*

C 039C1  
C 039C2  
C 039C5  
C 039CW1

**RG 59 MULTICORES - available to special order in up to 10 core versions. Price and delivery lead time available from sales office 01773-311592.**

**URM 70 - plain stranded copper conductor (7/0.19mm) solid dielectric, plain copper braid screen with 94% coverage, pvc outer sheath. Limited fire hazard version available in LSF.**

URM 70, black, 100 metres  
URM 70, black, 200 metres  
URM 70, black, 250 metres  
URM 70, black, 500 metres  
URM 70, white, 100 metres  
URM 70, white, 500 metres  
URM 70, LSF, black, 500 metres  
URM 70, LSF, black 200 metres

*Order Ref.*

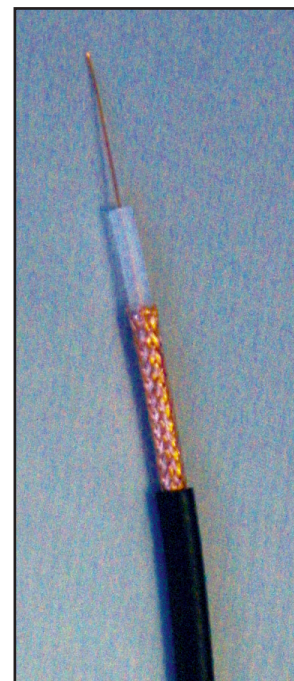
C 043B1  
C 043B2  
C 043B25  
C 043B5  
C 044W1  
C 044W5  
C 044A  
C 044L20

**Co-ax 12 - 0.75mm diameter plain copper centre conductor, solid dielectric, plain copper foil and copper braid screen, polyethylene outer sheath. This is an external cable which can be directly buried in suitably prepared ground.**

Co-ax 12 PE, black, 100 metres  
Co-ax 12 PE, black, 250 metres  
Co-ax 12 PE, black, 500 metres

*Order Ref.*

C 042B1  
C 042B25  
C 042B5



## SECTION 4 - Security Cables & Connectors

**RG 6 - plain copper conductor, 1mm diameter, airspaced dielectric, double screened - foil and braid, black pvc outer sheath. Available in white or brown sheath to order, traditionally used for satellite t.v. applications.**

RG 6, black, 100 metres  
RG 6, black, 250 metres

Order Ref.  
C0521  
C05225

**CTS 100 - plain copper conductor, 1mm diameter, airspaced dielectric, copper foil and copper braid screened, black pvc or LSF (low smoke and fume) outer sheath. This cable is manufactured by many companies and is known by other references e.g. TR 100, QC 100, SM 100A, H 109F, however all the cables share virtually identical physical and electrical characteristics and are therefore inter-changeable.**

CTS 100, black, 100 metres  
CTS 100, black, 250 metres  
CTS 100, black, 500 metres  
CTS100, white, 100 metres

Order Ref.  
C 045A1  
C 045A  
C 045A5  
C 045W1

CTS 100, LSF, black 100 metres  
CTS 100 LSF, black, 250 metres  
CTS 100 LSF, black, 500 metres

C 045L1  
C 045  
C 0455

CTS 100 PE, black, 500 metres

C 045PE

CTF 100 foam filled dielectric (Sat. tv use)

C 045QF

CT 100 RBS, black, direct burial, 500 metres

C 045RBG

**RG 11 - stranded tinned copper conductor, 7/0.41mm, solid dielectric, plain copper braid screen, black pvc outer sheath.**

RG 11 LSF a/u, black lsf sheath, 500 metres

Order Ref.  
C 044

**RG 11 SWA (steel wire armoured) - available to special order, call 01733 - 311592 for price and delivery.**

**CT 125 - solid plain copper conductor, 1.25mm diameter, airspaced dielectric, plain copper foil and plain copper braid screened, pvc, tsf, pe or RBS outer sheath. Suitable for internal, external and direct burial applications respectively. Exact equivalents from other manufacturers include QC 125, TR 125 and CTS 125.**

CT 125 pvc, black, 500 metres  
CT 125 pvc, black, 250 metres

Order Ref.  
C072A5  
C072A2

CT 125 PE, black, 1000 metres  
CT 125 PE, black, 500 metres  
CT 125 PE, black, 250 metres

C072P1  
C072P5  
C072P2

CT 125 RBS, green, 1000 metres  
CT 125 RBS, green, 500 metres  
CT 125 RBS, green, 250 metres

C072R10  
C072R5  
C072R2

CT 125 LSF, black, 250 metres  
CT 125 LSF, black, 500 metres

C 072L2  
C 072L5



## SECTION 4 - Security Cables & Connectors

**CT 167 - solid plain copper conductor, 1.67mm diameter, airspaced dielectric, plain copper foil and plain copper braid screened, pe or RBS outer sheath, suitable for external and direct burial purposes. Equivalents from other manufacturers would include TR 165.**

CT 167 PE, black, 500 metres  
CT 167 RBS, black, 500 metres  
CT 167 LSF, black, 250 metres

Order Ref.  
C 0735  
C 0735R  
C 0735LSF

**CT 233 - solid plain copper conductor, 2.33mm diameter, airspaced dielectric, plain copper foil and plain copper braid screened, pe sheath suitable for external and direct burial applications in suitably prepared ground.**

CT 233 PE, black, 250 metres

Order Ref.  
C 074

**RG 179 LSF - a miniature 75 ohm co-ax., overall diameter 2.5mm. Stranded conductor, 7/0.12mm, polyethylene dielectric, braid screen and lsf outer sheath in black.**

RG 179, black lsf sheath, 100 metres

Order Ref.  
C 075S

**RG 179 LSF - a miniature 75 ohm co-ax., overall diameter 2.5mm. Solid conductor, polyethylene dielectric, braid screen and lsf outer sheath in black.**

RG 179, black lsf sheath, solid conductor, 100 metres

Order Ref.  
C 075

**Mini-RG 59 - a miniature 75 ohm co-ax, nominal overall diameter 3.8mm. Solid conductor, polyethylene dielectric, braid screen and pvc outer sheath in black or white.**

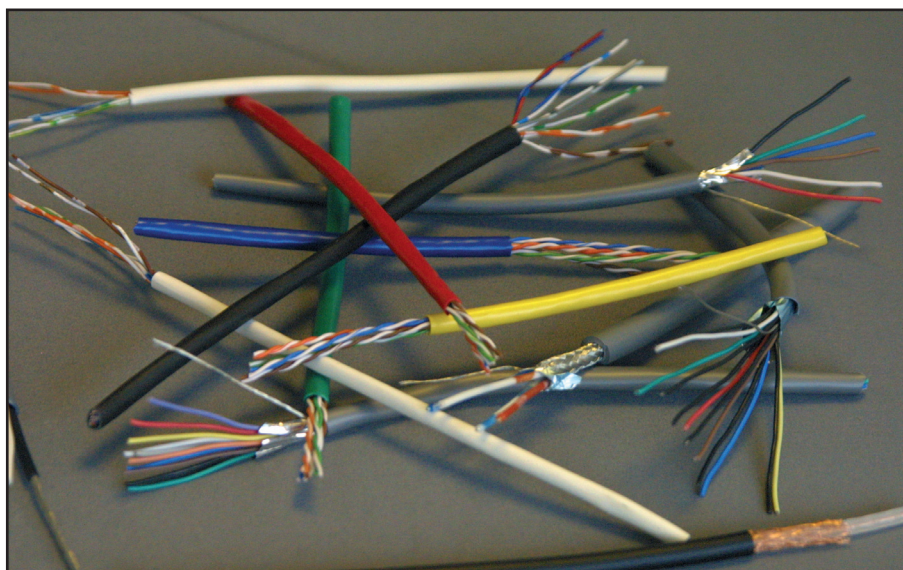
Mini-RG, white, 500 metres  
Mini-RG 59, black, 500 metres

Order Ref.  
C 041MINW  
C 041MIN

**TV Downlead - commercial grade low-loss, airspaced cable with plain copper 1mm solid conductor, plain copper braid screen and pvc outer sheath.**

TV co-ax, brown, 100 metre reels  
TV co-ax, brown, 250 metre reels

Order Ref.  
C 0771  
C 0772





## SECTION 4 - COMPOSITE CABLES

75 ohm co-axes with additional cores for power and telemetry.

RG 59 + 4 core, black LSF sheath  
2 x 0.5mm + 2 x 1.0mm cores

Order Ref.  
C 076A4

RG 59 + 2 cores, shotgun style  
2 x 0.75mm cores, white pvc sheath

C 076A

RG 59 + 2 cores, shotgun style  
2 x 0.75mm cores, black pvc sheath

C 076AB

RG 59 + 2 core + 2 core and earth, white LSF sheath  
2 x 1mm + 2 core and earth x 0.5mm

C 076B

RG 59 + 2 core + 2 core and earth, PE sheath  
2 x 1mm + 2 core and earth x 0.5mm

C 076C

RG 59 + 1 pair + 3 core, black LSF, shotgun style  
1 pair screened c/w drain wire + 3 x 1mm cores

C 076D

URM 70 + 4 core, black LSF sheath  
2 x 0.5mm + 2 x 1mm

C 076E

URM 70 + 11 cores, white LSF sheath  
2 x 0.75mm + 9 x 0.5mm cores

C 076F

URM 70 + 11 cores, black LSF sheath  
2 x 0.75mm + 9 x 0.5mm cores

C 076G

CT 100 equiv + 2 pair CW 1308, shotgun style  
White pvc sheath

C 076H

CT 100 equiv + w pair CW 1128, shotgun style  
Black PE sheath, 2 pair is jel filled

C 076J

Mini RG 59 + 2 core + 1 twisted pair  
2 x 1mm, grey LSF sheath

C 076K

Mini RG 59 + 1 core + 3 core  
1 x 7/0.25 + 3 x 7/0.16, cream LSF sheath

C 076L

Mini RG 59 + 2 core indiv. screened + 6 core alarm  
2 x 7/0.254 + 6 x 7/0.20mm cores

C 076M

Mini RG59 + 3 core + 3 twisted pairs, indiv. screened  
3 x 1mm cores + 3 pair data cable

C 076N

2 pair + 2 core, white LSF sheath  
2 x indiv. screened pairs c/w drain wire + 2 x 0.75mm cores

C 076O

2 pair + 2 core, brown LSF sheath  
2 x indiv screened pairs c/w drain wire + 2 x 0.75mm cores

C 076P

5 core + 1 core, covert camera cable  
5 x 7/0.20mm + 1 x 7/0.20mm lap screened, 1000v sheath

C 076Q

12 core + co-ax, BPT style cable (VCM 130)  
RG 59 style co-ax + 9 x 0.75mm cores + 3 x 1mm cores

C 076R

5 core + co-ax BPT style cable (VCM 60)  
RG 59 style co-ax + 3 x 0.34mm cores + 2 x 1mm cores

C 076S

5 pair + 2 core  
5 pair CW1308 telephone cable + 2 core 0.8mm

C 005AC



## SECTION 4 - Security Cables & Connectors

**CONNECTORS** - a range of quality BNC connectors for use with co-axial cables.

BNC 75 ohm male crimp, for RG59 (all versions)  
 BNC 75 ohm male crimp, for RG59 (miniature)  
 BNC 75 ohm male twist-on, for RG6/CT100/CT100LSF  
 BNC 75 ohm male twist-on, for RG59  
 BNC 75 ohm male crimp, for CT100  
 BNC 75 ohm male solder clamp, for CT100  
 BNC 75 ohm male crimp, for CT125PE  
 BNC 75 ohm male crimp, for CT125RBS  
 BNC 75 ohm male crimp, for RG11  
 BNC 75 ohm male crimp, for RG179  
 BNC 75 ohm male connector, for BT2003  
 BNC 75 ohm male connector, for BT2002  
 BNC 75 ohm male clamp connector  
 BNC 50 ohm male crimp, for RG58/9907

BNC 75 ohm female crimp, for RG59 (all versions)  
 BNC 75 ohm female crimp, for RG179  
 BNC double female (through or barrel connector)  
 BNC in-line female/female bulkhead connector  
 BNC female isolated bulkhead connector

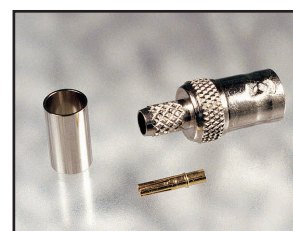
BNC T piece adaptor, female/male/female  
 BNC T piece adaptor, female/female/female  
 BNC Y adaptor, female/male/female  
 BNC F adaptor, female/male/female

Order Ref.

A 026  
 A 053M  
 A 028  
 A 0289  
 A 028C  
 A 028S  
 A 064  
 A 064R  
 A 086  
 A 053  
 A 054  
 A 054A  
 A 095  
 A 052



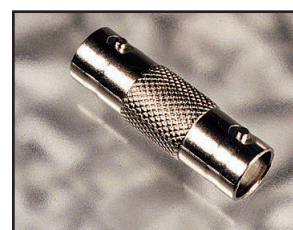
• A 026



• A 027



• A 028



• A 029



• A 031



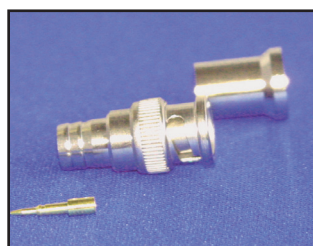
• A 061



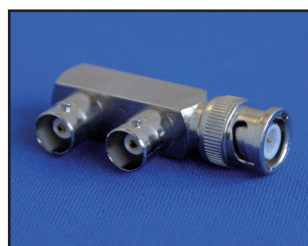
• A 030



• A 095



• A 086



• A 032

**ORDER BEFORE 4PM FOR SAMEDAY DESPATCH**



## SECTION 4 - SECURITY CABLES & CONNECTORS

### CONNECTORS - a range of BNC accessories, adaptors and F-type connectors.

BNC male - Phono male adaptor  
BNC male - Phono female adaptor  
BNC female - Phono male adaptor  
BNC male - F-type female adaptor  
BNC female - F-type male adaptor  
BNC right angle adaptor, female/male

BNC Patch panel, 16 way, loaded  
BNC Patch panel, 32 way, loaded

Strain relief boot for RG59, black  
Strain relief boot for RG59, blue  
Strain relief boot for RG59, red  
Strain relief boot for RG179, red

BNC male - BNC male flylead, booted, 0.5 metre  
BNC male - BNC male flylead, booted, 1 metre  
BNC male - BNC male flylead, booted, 2 metre  
BNC male - BNC male flylead, booted, 3 metre

BNC 50 ohm terminator  
BNC 75 ohm terminator

F connector, twist-on, for RG6/CT100  
F connector, crimp type, for RG6/CT100  
F connector, twist-on, for CT125PE

F-type compression connector (FM202) for CT125RBS  
F-type compression connector (FM72) for CT167RBS

F-F in-line connector, double female  
F right angled adaptor, male/female  
F terminating cap, 75 ohm

F-type Patch panel, 16 way, loaded

F-type (female) - PAL (female) adaptor  
F-type (female) - PAL (male) adaptor

*Our range of connectors continues to expand if you do not see the specific connector you require, please call our sales desk on 01733-311592*

Order Ref.

A 061  
A 062  
A 063  
A 075  
A 075F  
A 080

A 078  
A 0783

A 033  
A 033B  
A 033E  
A 033N

A 058  
A 059  
A 0592  
A 0593

A 056  
A 0567

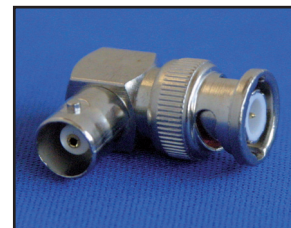
A 040  
A 041  
A 040PE

A 040FM202  
A 040FM72

A 042  
A 042RA  
A 040FTC

A 079

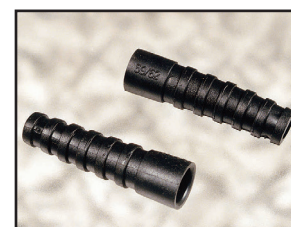
A 040FFPF  
A 040FFPM



• A 080



• A 075



• A 033



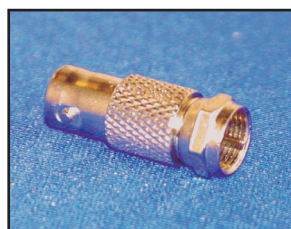
• A 058



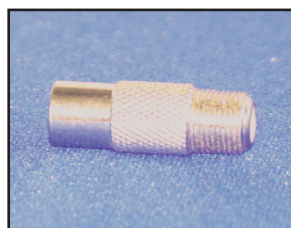
• A 042RA



• A 042



• A 075F



• A 040FFPM



**EXPORT ENQUIRIES WELCOME - 01733-311592**

## SECTION 5 - Cables

**Belden equivalent cables - cables which are generally physically and electrically identical to Belden cable, identified with the same Belden number, but supplied on metric length reels.**

8106, 6 pair overall foil and braid screen, 24 awg  
pvc sheath, 500 metre reels

Order Ref.

C092E

8442, 1 pair unscreened, 22 awg  
pvc sheath, 500 metre reels

C099E

8471 LSF, 1 pair unscreened, 16 awg  
low smoke and fume sheath, 500 metre reels

C099G

8719 LSF, 1 pair foil screen, 16 awg  
low smoke and fume sheath, 500 metre reels

C 09319

8723 LSF, 2 pair individual foil screen, 22 awg  
low smoke and fume sheath, 500 metre reels

C 093B

8723 LSF, 2 pair individual foil screen, 22 awg  
low smoke and fume sheath, 250 metre reels

C 093C

8723 LSF, 2 pair individual foil screen, 22 awg  
low smoke and fume sheath, 100 metre reels

C 093D

8723 PE, 2 pair individual foil screen, 22 awg  
pe sheath for external applications 500 metre reels

C 093E

8723 RBS, 2 pair individual foil screen, 22 awg  
RBS sheath for direct burial applications 500 metre reels

C 093RBS

8723 SWA, 2 pair individual foil screen, 22 awg  
steel wire armoured for direct burial applications 500 metre reels

C 093SWA

8760 LSF, 1 pair foil screen, 18 awg  
low smoke and fume sheath, 500 metre reels

C 094B

8760 LSF, 1 pair foil screen, 18 awg  
low smoke and fume sheath, 250 metre reels

C 094C

8760 PE, 1 pair foil screen, 18 awg  
pe sheath, 250 metre reels

C 094PE

8761 LSF, 1 pair foil screen, 22 awg  
low smoke and fume sheath, 500 metre reels

C 0941

8777 LSF, 3 pair individual foil screen, 22 awg  
low smoke and fume sheath, 500 metre reels

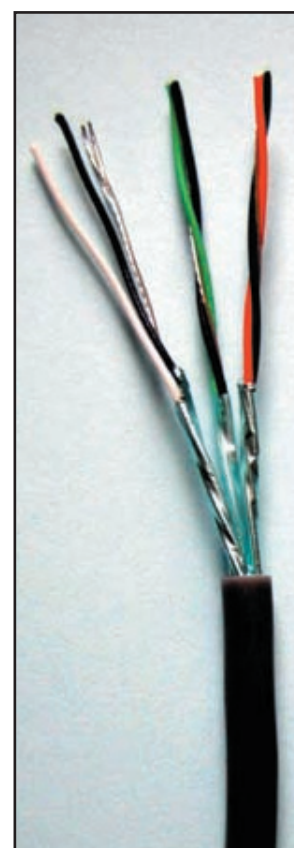
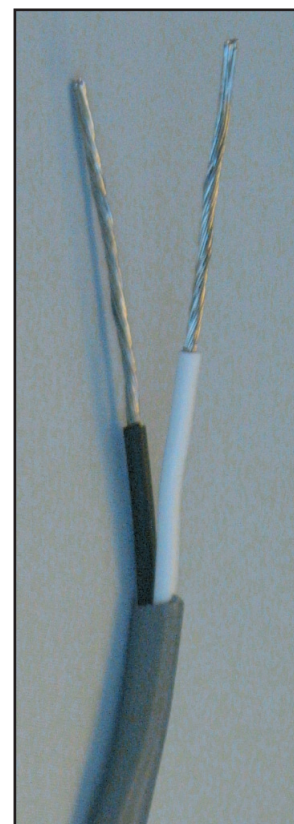
C095B

8777 PE, 3 pair indiv. foil screen, 22awg, pe sheath for external/direct  
burial applications. 500 metre reels

C095AB

8778 LSF, 6 pair individual foil screen, 22 awg  
low smoke and fume sheath, 500 metre reels

C095C



**SCHEDULED & CALL-OFF ORDERS WELCOME**



## SECTION 5 - Cables

### Belden equivalent cables - continued

9368 LSF, 2 pair individual foil screen, 18 awg  
low smoke and fume sheath, 500 metre reels

9402 LSF, 2 pair individual foil screen, 20 awg  
low smoke and fume sheath, 500 metre reels

9501 LSF, 1 pair foil screen, 24 awg  
low smoke and fume sheath, 500 metre reels

9502 LSF, 2 pair overall foil screen, 24 awg  
low smoke and fume sheath, 500 metre reels

9502 LSF, 2 pair overall foil screen, 24 awg  
low smoke and fume sheath, 100 metre reels

9503 LSF, 3 pair overall foil screen, 24 awg  
low smoke and fume sheath, 500 metre reels

9503 PE, 3 pair overall foil screen, 24 awg  
pe sheath, 500 metre reels

9504 LSF, 4 pair overall foil screen, 24 awg  
low smoke and fume sheath, 500 metre reels

9504 LSF, 4 pair overall foil screen, 24 awg  
low smoke and fume sheath, 100 metre reels

9506 PE, 6 pair overall foil screen, 24 awg  
pe sheath, 500 metre reels

9506 LSF, 6 pair overall foil screen, 24 awg  
low smoke and fume sheath, 500 metre reels

9508 LSF, 8 pair overall foil screen, 24 awg  
low smoke and fume sheath, 500 metre reels

9510 LSF, 10 pair overall foil screen, 24 awg  
low smoke and fume sheath, 500 metre reels

9534 LSF, 4 core overall foil screen, 24 awg  
low smoke and fume sheath, 500 metre reels

9536 LSF, 6 core overall foil screen, 24 awg  
low smoke and fume sheath, 500 metre reels

9538 LSF, 8 core overall foil screen, 24 awg  
low smoke and fume sheath, 500 metre reels

9540 LSF, 10 core overall foil screen, 22 awg  
low smoke and fume sheath, 500 metre reels

Order Ref.

C096B

C096C

C096E

C096G

C096H

C096H2

C096HPE

C096J

C096K

C096P

C096LS

C096M

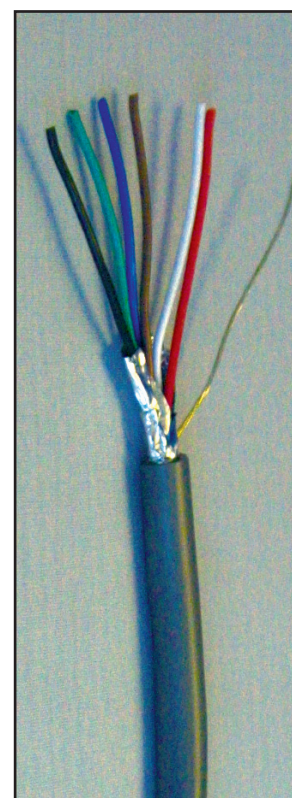
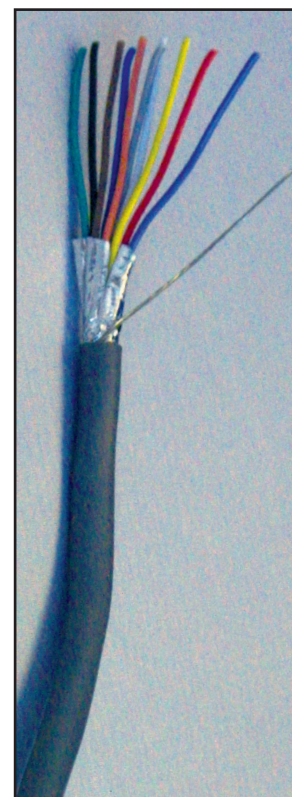
C096N

C096P

C096R

C096S

C096S4





## SECTION 5 - Cables

### Belden equivalent cables - continued

9728 LSF, 4 pair, individual foil screen pairs, 24 awg  
low smoke and fume sheath, 500 metre reels

C096S8

9729 LSF, 2 pair individual foil screen, low capacitance  
24 awg, low smoke and fume sheath, 500 metre reels

C096U

9730 LSF, 3 pair, individual foil screen pairs, 24 awg  
low smoke and fume sheath, 500 metre reels

C096VA

9829 LSF, 2 pair overall foil and braid screen, 24 awg  
low smoke and fume sheath, 500 metre reels

C096V

9841 LSF, 1 pair foil and braid screen, 24 awg  
low smoke and fume sheath, 500 metre reels

C096W

9842 LSF, 2 pair overall foil and braid screen, 24 awg  
low smoke and fume sheath, 500 metre reels

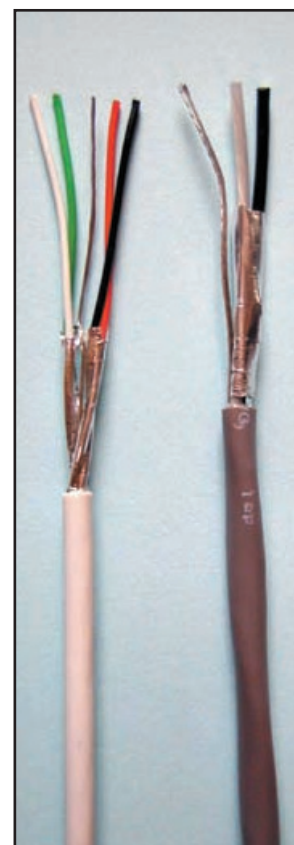
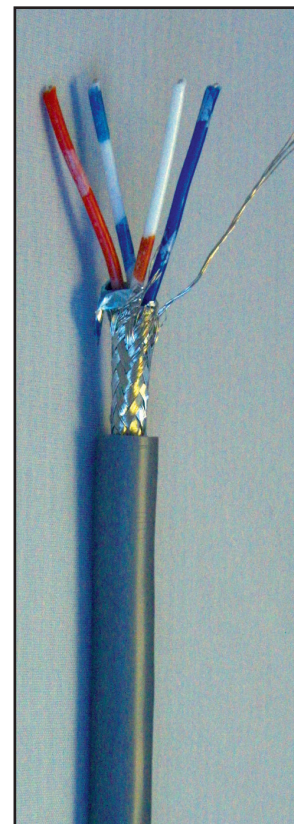
C096Y

9842 PE, 2 pair overall foil and braid screen, 24 awg  
pe sheath for external/direct burial application, 500 metre reels

C096Z

**The Belden cables listed represent those which we are most often asked to supply. If you have a requirement for a cable which is not listed we will be pleased to quote. Cables can be supplied on alternative length reels to those shown if required.**

**Many Belden equivalent cables stocked on 500m reels but can be cut to length (within reason) at no extra charge. Please contact the Sales Office for further details and availability.**



## SECTION 5 - Cables

**Defence Standard cables** - multicore flexible cables often used in computers, military vehicles, signalling and telemetry applications.

**DEF. STAN. 61-12 part 4** - miniature and sub-miniature sizes. 7/0.20mm tinned copper conductors, pvc insulated, black pvc sheathed (unless indicated otherwise).

Type A is unscreened, type C is overall tinned copper braid screened.

### UNSCREENED

	Order Ref.
7-2-2A 2 core	C 0622
7-2-4A 4 core	C 0624
7-2-8A 8 core	C 0628
7-2-12A 12 core	C 06212
7-2-20A 20 core	C 06220

Cables listed above normally supplied on 100 metre reels, longer lengths available if required

### OVERALL BRAID SCREENED

7-2-4C 4 core	C 0634
7-2-4C 4 core white sheath	C 0634W
7-2-6C 6 core	C 0636
7-2-8C 8 core	C 0638
7-2-12C 12 core	C 06312
7-2-20C 20 core	C 06320
7-2-36C 36 core	C 06336
7-2-50C 50 core	C 06350

Cables listed above normally supplied on 100 metre reels, longer lengths available if required.

**DEF. STAN. 61-12 part 5** - standard size cable. 16/0.20mm tinned copper conductors, pvc insulated, black pvc sheath (unless indicated otherwise).

Type A is unscreened, type C is overall tinned copper wire braid screened and type S is overall foil screened.

### UNSCREENED

16-2-4A 4 core	C 0644
16-2-8A 8 core	C 0648
16-2-12A 12 core	C 06412

Cables listed above normally supplied on 100 metre reels, longer lengths available if required

### OVERALL BRAID SCREENED

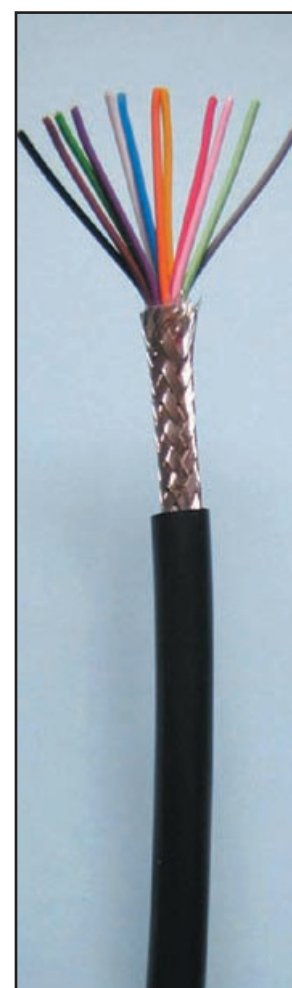
16-2-4C 4 core	C 0654
16-2-8C 8 core	C 0658
16-2-12C 12 core	C 06512
16-2-25C 25 core	C 06525
16-2-36C 36 core	C 06536
16-2-50C 50 core	C 06550

Cables listed above normally supplied on 100 metre reels, longer lengths available if required

### OVERALL FOIL SCREENED

16-2-6S 6 core, grey sheath	C 0666
16-2-8S 8 core, grey sheath	C 0668
16-2-12S 12 core, grey sheath	C 06612

Cables listed above normally supplied on 100 metre reels, longer lengths available if required



## SECTION 5 - Cables

### Booklet cables.

**Flat twin & earth, - 300/500 volts, solid copper conductor, pvc insulated, pvc sheathed in grey or white, ref. 6242Y. Supplied on 100 metre reels. To BS 6004**

1.0mm 6242Y  
1.5mm 6242Y  
2.5mm 6242Y

Order Ref.  
C 0671  
C 06715  
C 06725

**Mains flex, - stranded copper conductors, pvc insulated, pvc sheathed in various colours, ref 2192Y, 2182Y, 2183Y, 3183Y. Supplied on 100 metre reels. To BS 6500**

2192Y oval, 0.75mm, black, 2 core, 300/300 volts  
2182Y, 0.5mm, white, 2 core, 300/300 volts  
2182Y, 0.5mm, black, 2 core, 300/300 volts  
2183Y, 0.5mm, white, 3 core, 300/300 volts  
2183Y, 0.75mm, white, 3 core, 300/300 volts  
3183Y, 0.75mm, white, 3 core, 300/500 volts  
3183Y, 0.75mm, black, 3 core, 300/500 volts  
3183Y, 1.0mm, white, 3 core, 300/500 volts  
3183Y, 1.0mm, black, 3 core, 300/500 volts  
3183Y, 1.5mm, white, 3 core, 300/500 volts  
3183Y, 1.5mm, black, 3 core, 300/500 volts

Order Ref.  
C 068A  
C 068C  
C 068B  
C 069A  
C 069B  
C 069C  
C 069D  
C 069E  
C 069F  
C 069G  
C 069H

**For any other flexible not listed (3192Y,3182Y,3093Y,3184Y,3185Y,3192Y) please contact sales office for price and availability. Longer reel lengths (200m/500m) can be supplied.**

**TRS cables - rubber insulated, rubber sheathed flexible mains cable. Black only, supplied on 100 metre reels. To BS 6500.**

3183 TRS, 0.75mm, 3 core  
3184 TRS, 0.75mm, 4 core

Order Ref.  
C 0703  
C 0704

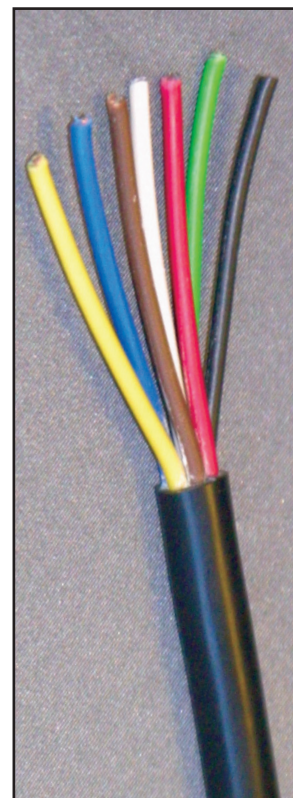
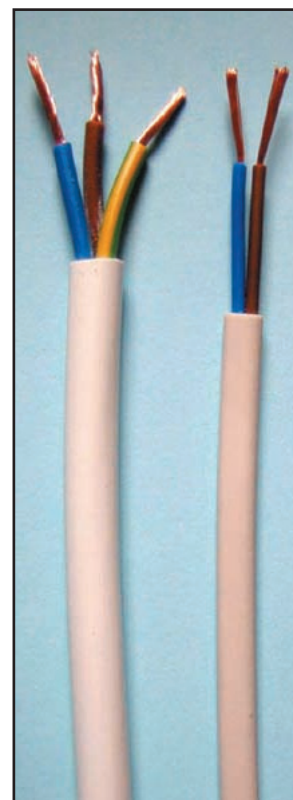
**Other conductor sizes and core combinations available, call 01733-311592 with your requirement and we will be pleased to quote.**

**Armoured mains cable - copper conductors, XLPE insulated, pvc bedding, single steel wire armoured and black pvc outer sheath. 600/1000 volt, to BS 5467.**

1.5mm 2 core 6942X  
2.5mm 2 core  
4.0mm 2 core  
6.0mm 2 core  
1.5mm 3 core 6943X  
2.5mm 3 core  
4.0mm 3 core  
6.0mm 3 core  
1.5mm 4 core 6944X  
2.5mm 4 core  
4.0mm 4 core  
6.0mm 4 core

Order Ref.  
C 0711  
C 0712  
C 0714  
C 0716  
C 0721  
C 0722  
C 0724  
C 0726  
C 0731  
C 0732  
C 0734  
C 0736

**Above cables supplied on 500 metre or 1,000 metre reels or cut to length. Larger conductor sizes and higher core counts available - p.o.a.**



## SECTION 5 - Cables

**Fire alarm cable. 100 metre reels.**

	Order Ref.		Order Ref.		Order Ref.
1.5mm, 2 core + e, red	C 0982	clips 50/pack	F 029B	glands 10/pack	F 030
1.5mm, 4 core + e, red	C 0984	clips 50/pack	F 029C	glands 10/pack	F 030B
Shrouds to suit above cables	10/pack	A 065	LSF, 10/pack	A 066	

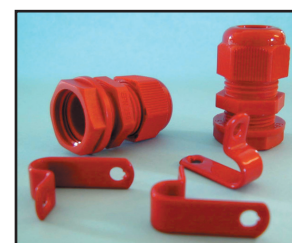
**Larger conductor sizes and higher core count available - p.o.a.**

**PLEASE REMEMBER** - we are constantly reviewing our stock holding policy and increasing our range of cables supplied from stock. It is impossible to list here all the types of cable which we have access to.

However the following list will give you an idea of the types of cable which have been supplied over the last 12 months by CTS in addition to those detailed in this catalogue:

Control flexes - YY, CY, SY  
Arctic Grade mains flex  
EPR/CSP mains flex  
Armoured multicore to BS 6346  
Automotive cables  
0361 Welding cable  
Coil End Lead  
BS 5308 Instrumentation cables  
Microphone & audio cables  
Thermocouple extension & compensating cable  
Silicone insulated wires  
Custom built cables to customer's own specification

The message is simple - if you have a cable requirement, give CTS a call. You will be assured of friendly service at all times.



**MAKING CABLES OUR BUSINESS**

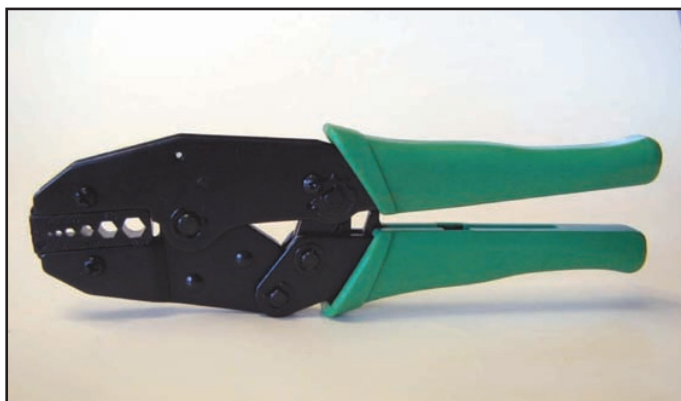
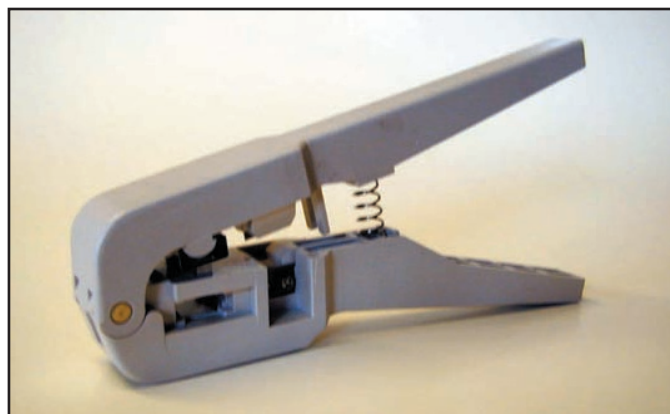
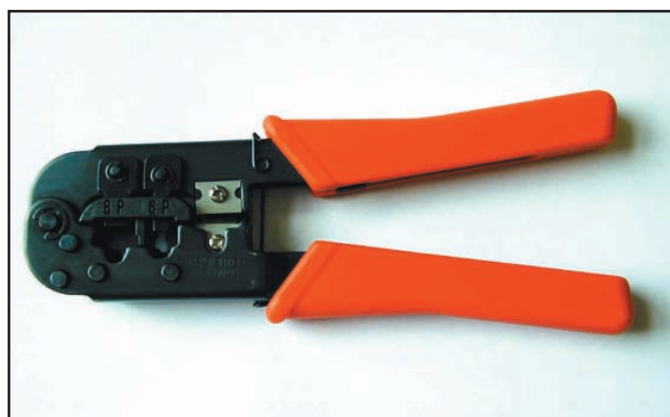
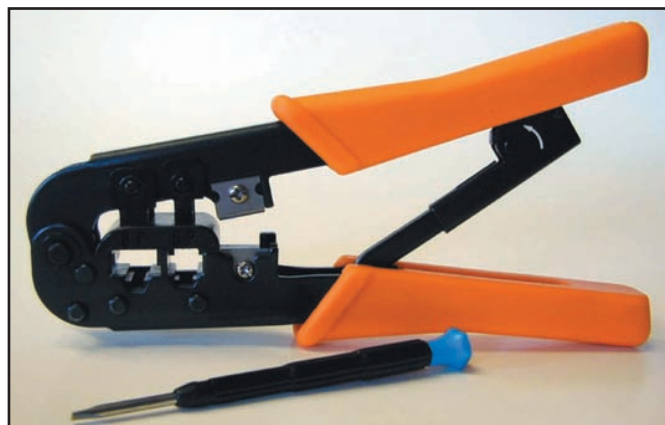
**e-mail sales at: [sales@ctsm.co.uk](mailto:sales@ctsm.co.uk)**



## SECTION 6 - Installation Accessories

**Installation tools - a selection of tools for telecom and other applications.**

	<i>Order Ref.</i>
Crimp tool, 6p4c	T 001
Crimp tool RJ11/RJ45	T 003
Crimp tool RJ45	T 017
Crimp tool, 4p4c/4p2c	T 020
Crimp tool, 8p8c/6p6c/4p/4c	T 005B
Crimp tool BNC, for RG59	T 016
Crimp tool BNC, for CT100	T 016C
Crimp tool BNC, for CT125RBS (barrel)	T 016CT
Crimp tool BNC, for CT125RBS (pin)	T 016CTP
Crimp tool BNC, for Mini RG59	T 016M
Crimp tool BNC, for CT125PE	T 016PE
Crimp tool BNC, for RG11	T 01611
Crimp tool BT plug, plastic	T 018
Crimp tool BT, 4 way/6 way	T 004
Krone insertion tool 2A	T 006
CTS 2A insertion tool	T006A
Insertion tool, plastic	M006
110 punch down tool	T006B
Co-ax cable stripper	T 019



## SECTION 6 - Installation Accessories

### Cable Ties - packed in bags of 100.

4" (100mm x 2.5mm)	black	Order Ref.	F009A
4" (100mm x 2.5mm)	white		F009
6" (140mm x 3.6mm)	black		F009B
6" (140mm x 3.6mm)	white		F009W
8" (200mm x 3.6mm)	black		F011B
8" (200mm x 3.6mm)	white		F011W
12" (295mm x 4.8mm)	black		F005B
12" (295mm x 4.8mm)	white		F005W



### Drop wire equipment

Dropwire bracket no. 22	Order Ref.	F 015
Dropwire clamp no. 10		F 014
Extended dropwire bracket no. 32		F 016
Dropwire tensioner		F 017
<i>Catenary wire available to special order.</i>		



### Fibre optic termination kit

Siecor termination kit	Order Ref.	T 024
Siecor ST II connector 62.5/125		A 043
Siecor ST II connector 50/125		A 043B
Siecor SC connector 62.5/125		A 044
Siecor SC connector 50/125		A 043A
AMP lightcrimp ST+ connector, 62.5/125		A 043L
AMP in-line STII connector		A 043A
Singlemode connectors also available for Siecor kit.		



### Insulating Tape

33m x 19mm wide, black	Order Ref.	TZP 3
33m x 19mm wide, white		TZP 4

### Miscellaneous equipment

6mm draw rope (500 metres)	Order Ref.	F 021
Pit key lifters		T 014
Pouyet head tool		T 013
Cable Stripping tool		T 005



**RING BEFORE 4PM FOR SAMEDAY DESPATCH**



**BRITISH CABLE MANUFACTURERS**

**MADE IN ENGLAND 3183Y FLEX To BS.6500**

**FACTORY : PETERBOROUGH ENGLAND**

**EXPORT ENQUIRIES WELCOME - 01733-311592**



## SECTION 7 - Cable Manufacture



### Internal Telephone Cables CW 1308

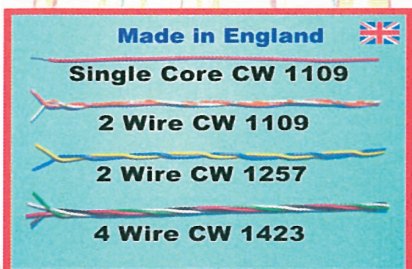
<b>CONDUCTOR:</b>	1/0.5mm plain annealed copper
<b>SPECIFICATION:</b>	Manufactured to British Telecom Specification CW 1308
<b>INSULATION:</b>	PVC, colour coded, ring mark
<b>MAKE - UP</b>	1 pair to 100 pair (optional earth)
<b>EARTH WIRE</b>	1/0.38 Plain Copper PVC Insulated
<b>SHEATH COLOURS:</b>	White / Black / Grey / Cream



### Drop Wire No. 10 Specification CW 1378

<b>CONDUCTOR:</b>	1/0.5mm plain annealed copper
<b>SPECIFICATION:</b>	Manufactured to British Telecom Specification CW1378A
<b>INSULATION:</b>	PVC
<b>CORE COLOURS</b>	Orange / White / Green / Black)
<b>STRENGTH MEMBERS</b>	Brass Covered Steel -PVC Insulated
<b>OUTER SHEATH</b>	Polyethylene

Other Drop Wires Available



### Jumper Wire Cw1257 CW1423 CW1109

<b>CONDUCTOR:</b>	1/0.5mm plain annealed copper
<b>SPECIFICATION:</b>	Manufactured to British Telecom Specification CW1257 CW1423 CW1109
<b>INSULATION</b>	CW1257 Radiation Cross Link PVC CW1423 Supercede the Above CW1109 Standard PVC
<b>MAKE - UP</b>	2 Wire - and - 4 Wire



### Functional Earth Wire To CW 1044B

<b>CONDUCTOR:</b>	Single Core Annealed Copper Solid or Stranded Conductor
<b>SPECIFICATION:</b>	Manufactured to British Telecom Specification CW 1044B
<b>INSULATION:</b>	PVC
<b>MAKE - UP</b>	1.5mm To 25mm PVC Sheath Cream
<b>EARTH WIRE</b>	1/0.38 Plain Copper PVC Insulated
<b>SHEATH COLOURS:</b>	Cream PVC Sheath Printing With Black Characters

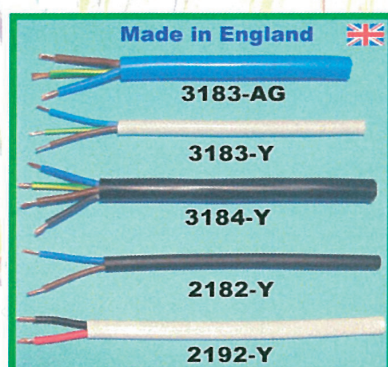


### Cable Limited Fire Hazard To CW1600

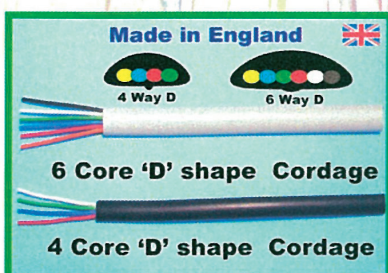
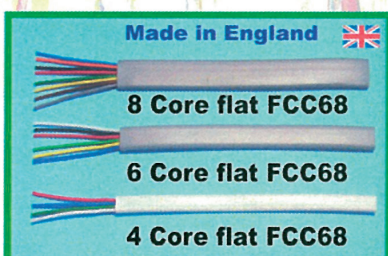
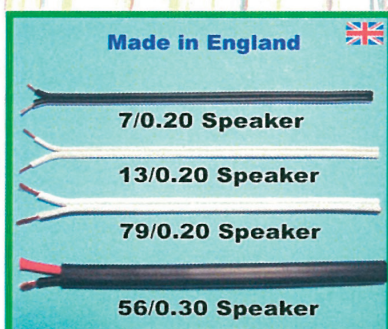
<b>CONDUCTOR:</b>	1/0.5mm plain annealed copper
<b>SPECIFICATION:</b>	Manufactured to British Telecom Specification Cw1600
<b>INSULATION:</b>	Polyethylene
<b>MAKE - UP</b>	3 Pair up to 50 Pair
<b>EARTH WIRE</b>	1/0.38 Plain Copper 20 Pair & Above
<b>SHEATH</b>	PVC or LSOH Material ( White )

**SCHEDULED & CALL-OFF ORDERS WELCOME**





**Heat Resisting Flexible**



## PVC Flexible Mains Cords & Cables

<b>CONDUCTOR:</b>	Plain annealed copper conductor
<b>SPECIFICATION:</b>	Manufactured to BS 6500
<b>INSULATION:</b>	PVC
<b>VOLTAGE RATING:</b>	300/500V
<b>CORES:</b>	2 Core Oval 2,3,4,5 Core Round
<b>SIZES:</b>	0.5mm <sup>2</sup> to 2.5mm <sup>2</sup>
<b>SHEATH COLOURS:</b>	Black, Grey, White or Orange

## Heat Resisting ( 85° C or 105° C ) Security / Alarm / Cables

<b>CONDUCTOR:</b>	7/0.20mm - Tinned Annealed copper
<b>SPECIFICATION:</b>	Manufactured to BS 4737 ( section 3.30 )
<b>INSULATION:</b>	PVC / POLY
<b>VOLTAGE:</b>	Maximum operating voltage 50 r.m.s
<b>MAKE - UP</b>	4 , 6 , 8 , & 12 cores
<b>SHEATH COLOURS:</b>	WHITE / BROWN / BLACK

## Flexible Figure '8' Speaker Cables

<b>CONDUCTOR:</b>	Plain annealed copper conductor
<b>SPECIFICATION:</b>	Manufactured To BS6141
<b>INSULATION:</b>	PVC
<b>VOLTAGE RATING:</b>	300/300V
<b>SIZES:</b>	7/0.20 13/0.20 28/0.15 42/0.15 24/0.20 32/0.20 : 42/0.20 79.020
<b>COLOURS:</b>	White, Grey, Black, with tracers

## Telephone Cordage Flat FCC68 SBS1620

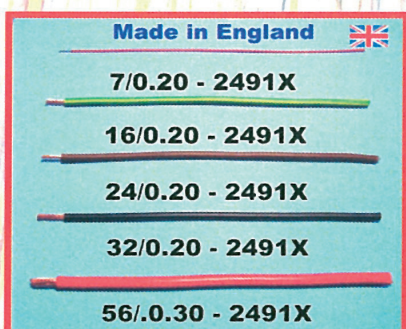
<b>CONDUCTOR:</b>	7/0.15 Tinned annealed copper
<b>SPECIFICATION:</b>	FCC 68 and SBS 1620
<b>INSULATION:</b>	PVC or Polypropylene
<b>MAKE - UP</b>	4, 6 and 8 cores Conductors are laid up in a parallel Fashion with a pvc outer sheath With a flat cross section
<b>SHEATH COLOURS:</b>	Grey / Ivory / White / Black

## Telephone Cordage 'D' Shape

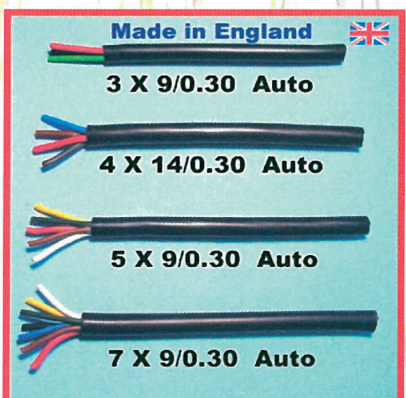
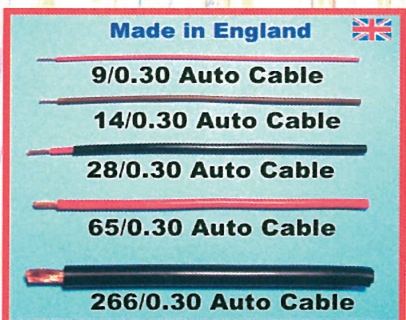
<b>CONDUCTOR:</b>	Duplex/Simlex or 7/0.15 Tinned
<b>SPECIFICATION:</b>	CW 1311 - CW1630 - CW 1690
<b>INSULATION:</b>	PVC or Polypropylene
<b>MAKE - UP</b>	4, 6 and 8 core Conductors are laid up in a parallel Fashion with a pvc outer sheath With a 'D' Shape cross section
<b>SHEATH COLOURS:</b>	Grey / Ivory / White / Black



## SECTION 7 - Cable Manufacture



**Available 2491B Zero Halogen Low Smoke**



### PVC Conduit Cables -Solid & Stranded

<b>CONDUCTOR:</b>	Single Plain Annealed Solid or Stranded Copper Conductors
<b>SPECIFICATION:</b>	Manufactured to BS 6004
<b>INSULATION:</b>	PVC OR LSOH
<b>VOLTAGE RATING:</b>	450 / 750V (1.0mm 300 / 500V)
<b>SIZES:</b>	1.0mm <sup>2</sup> to 50.0mm <sup>2</sup>
<b>COLOURS:</b>	Available in a Variety Colours

**Available 6491B Zero Halogen Low Smoke**

### PVC Single Core To BS6004 & BS6500

<b>CONDUCTOR:</b>	Single Plain Annealed Solid or Stranded Copper Conductors
<b>SPECIFICATION:</b>	Manufactured to BS 6500 (0.5mm to 1.0mm) and BS6004 (1.5mm to 4.0mm)
<b>INSULATION:</b>	PVC OR LSOH
<b>VOLTAGE RATING:</b>	300 / 500V, 450 / 750V
<b>SIZES:</b>	0.5mm <sup>2</sup> to 4.00mm <sup>2</sup>
<b>COLOURS:</b>	Available in a Variety Colours

### Automotive Wire and Cables to BS6862

<b>CONDUCTOR:</b>	Stranded 0.30mm Diameter plain Annealed Copper Wire
<b>SPECIFICATION:</b>	Manufactured to BS 6862 part 1 where applicable
<b>INSULATION:</b>	PVC
<b>SIZES:</b>	0.65mm <sup>2</sup> to 8.5mm <sup>2</sup> (9 to 120 strands)
<b>COLOURS:</b>	Available in a Variety Colours

### Automotive Wire and Cables to BS6862

<b>CONDUCTOR:</b>	Stranded 0.30mm Diameter plain Annealed Copper Wire
<b>SPECIFICATION:</b>	Manufactured to BS 6862 part 1 where applicable
<b>INSULATION:</b>	PVC
<b>SIZES:</b>	0.65mm <sup>2</sup> to 2.5mm <sup>2</sup>
<b>CORE COLOURS</b>	Yellow.Blue.Black.Green.Brown Red.White
<b>COLOURS:</b>	Black / White PVC

**PRIORITY ORDER LINE - 01733-311592**



**Table 1. American wire gage (AWG)**

Gage (AWG)	Stranding (nom. AWG)	Min average. o.d. of strand	Approximate O.D.		Max. resistance Ohms/1,000ft
			Inches	m.m.	
28	7/36	.0048	.015	.381	70.7
28	19/40	.0029	.016	.406	70.7
26	7/34	.0060	.019	.483	44.4
26	10/36	.0050	.021	.553	44.4
26	19/38	.0036	.020	.508	44.4
24	7/32	.0076	.024	.610	27.7
24	10/34	.0064	.024	.584	27.7
24	19/36	.0046	.024	.610	27.7
24	42/40	.0031	.023	.584	27.7
22	7/30	.0096	.030	.762	17.5
22	19/36	.0058	.031	.787	17.5
22	26/36	.0050	.030	.762	17.5
20	7/28	.0126	.037	.890	10.9
20	10/30	.0101	.037	.890	10.9
20	19/32	.0073	.037	.940	10.9
20	26/34	.0063	.036	.914	10.9
20	42/36	.0049	.036	.914	10.9
18	7/26	.0152	.048	1.22	6.92
18	16/30	.0101	.047	1.20	6.92
18	19/30	.0092	.049	1.24	6.92
18	42/34	.0062	.047	1.20	6.92
18	65/36	.0050	.047	1.20	6.92
16	7/24	.0192	.060	1.52	4.35
16	19/29	.0117	.058	1.47	4.35
16	26/30	.0100	.059	1.50	4.35
16	65/34	.0063	.059	1.50	4.35
16	105/36	.0050	.059	1.50	4.35
14	7/22	.0242	.076	1.85	2.73
14	19/26	.0147	.071	1.85	2.73
14	42/30	.0099	.075	1.85	2.73
14	105/34	.0063	.075	1.85	2.73

**Table 2. Current carrying capacities, flexible cords to BS 6500**

Conductor cross Sectional area. Square mm	Current carrying Capacities Amps	Volt drop per Amp per metre, d.c/single phase		Volt drop per Amp per metre, 3 phase	
		a.c	mV	a.c	mV
0.5	3		83		72
0.75	6		56		48
1.00	10		43		37
1.5	15		31		26
2.5	20		18		16
4.0	25		11		9.6

Information provided in this section is given in good faith and is correct to the best of our knowledge however no warranty is given or to be implied with regard to this information

## CTS M LTD. Conditions of Sale

CTS Manufacturing Ltd. shall hereafter be called the vendor. The customer shall mean the person, company or organisation agreeing to purchase goods or services from the vendor. Goods shall mean equipment, spare parts, repairs or services provided by the vendor.

1. Unless expressly agreed in writing all contracts for the supply of goods by the vendor shall be subject to the terms and conditions printed below. Quotations are without engagement and are subject to goods/services being available at time of order.
2. Orders placed by purchasers new to the vendor will have to be on a "cheque with order" basis, alternatively credit cards may be accepted.
3. The property in the goods shall remain with the vendor until such time as the goods are paid for in full by the customer. Until payment is made the customer shall hold the goods on trust for the vendor, be responsible for any damage incurred and clearly identify the goods as belonging to the vendor. If the goods have been re-sold before the property in the goods has passed to the customer, beneficial entitlement shall be attached to the proceeds of the re-sale and the vendor reserves the right to enter upon any premises where the goods are stored (or assumed to be stored) and repossess same.
4. Carriage shall be charged on all orders or separate deliveries under £500 net value. Orders over £500 net will be carriage free U.K. mainland, unless a specific delivery time is requested when a full charge will be imposed.
5. Time/date given for delivery by the vendor is given in good faith, no liability will be accepted for late or non-delivery of goods.
6. Goods delivered in damaged condition should be "refused" by the customer. Where there is non-delivery, short-delivery or goods damaged on delivery, claims should be made in writing to the vendor within 3 working days of the invoice date.
7. The vendor guarantees its goods and services for 12 months, unless the goods carry another manufacturer's own guarantee. Goods may only be returned with the express permission of the vendor and at the customer's expense. All returned goods should be sent with a returns note stating reason for return/nature of fault.
8. Goods bought in specially for the customer may only be returned if the vendor's supplier has agreed to take the goods back. All returned goods will be subject to a handling charge. All cancelled orders will be subject to a cancellation charge.
9. Payment of invoices, by credit account customers, is to be made by the end of the month following the month in which the goods are supplied (30 days net month end) unless otherwise authorised. Late payment may result in suspension of supply, recovery of goods already supplied and not paid for or the whole of the account becoming due and payable.
10. Interest may be charged on overdue invoices, in which case interest will accrue from the date when payment becomes due from day to day until the date of payment. The rate of interest shall be 4% per month on the whole outstanding invoice total, accruing at such rate as well as before any judgement.
11. Under no circumstances will the vendor accept any liability for consequential damages or loss arising from goods supplied by the vendor, as requested by the customer or as recommended by the vendor.
12. Quotations are given subject to the vendor being able to purchase/obtain the specific goods. Price quoted refers to that quantity of goods and not necessarily to larger or smaller quantities.
13. Prices are subject to change without prior notice.
14. Specifications for goods are given by the vendor in good faith, to the best of the vendor's knowledge and do not constitute a guarantee. Any liability from goods incorrectly specified by the vendor shall be limited to replacement of goods up to the value of the goods originally supplied.
15. Force Majeure - the vendor shall not be liable to the customer for any failure to perform its obligations due to circumstances beyond its control, including war, strikes, fire, failure of power supplies, delay caused by other manufacturers & suppliers, explosions, breakdowns, industrial disputes, floods, Government action or any action outside the vendor's reasonable control and Acts of God. In such event the vendor may elect by written notice to cancel any agreement with the customer or elect to extend the time for performance so that performance can reasonably be effected.
16. The vendor reserves the right to cancel any credit facilities where a breach of these conditions has taken place.
17. These Conditions of Sale shall be governed by and construed in accordance with English Law.



**QUALITY CERTIFICATION AGENCY**

# *Certificate of Registration*

This is to Certify that

***C.T.S.M LTD***

Is registered with Quality Certification Agency  
to the following Quality Systems Specification:-

***BS EN ISO 9001: 2000***

**Scope of Registration:**





***MANUFACTURE & SUPPLY OF TELECOMMUNICATIONS EQUIPMENT***

**Certificate Number:** 6003020716

**Date of Registration:** 15 DECEMBER 2003

**Date of Expiry:** 16 SEPTEMBER ANNUALLY UNLESS STAMPED BELOW

## ***Annual Audit Stamp***

 DATE: 24-09-04	 DATE: 13-09-05	 DATE: 21-09-06	 DATE: 02/09/07	

*This Certificate must be stamped by QCA at the time of each Annual Audit.*

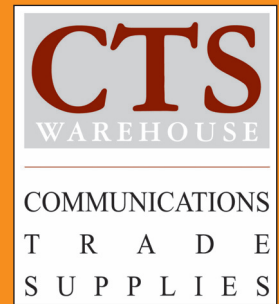
*To verify the validity of this Certificate - contact QCA*

*This Certificate is the property of QCA and must be returned upon request.*



On behalf of QCA  
Quality Certification Agency





## **CTS MANUFACTURING LIMITED**

CTS Warehouse  
Units 3 and 4, Stevern Way  
Reynolds Industrial Park  
Fengate  
Peterborough  
Cambridgeshire  
PE1 5EL

**Telephone: +44 (0)1733 311592 (6 Lines)**

**Facsimile: +44 (0)1733 344775**

E-mail: [sales@ctsm.co.uk](mailto:sales@ctsm.co.uk)  
[www.ctsm.co.uk](http://www.ctsm.co.uk)